

# PARTS LIST

## CAUTION

- The parts identified by the  $\triangle$  symbol are important for the safety. Whenever replacing these parts, be sure to use specified ones to secure the safety.
- The parts not indicated in this Parts List and those which are filled with lines — in the Parts No. columns will not be supplied.
- P. W. Board Ass'y will not be supplied, but those which are filled with the Parts No. in the Parts No. columns will be supplied.

## ABBREVIATIONS OF RESISTORS, CAPACITORS AND TOLERANCES

RESISTORS		CAPACITORS	
C R	Carbon Resistor	C CAP.	Ceramic Capacitor
F R	Fusible Resistor	E CAP.	Electrolytic Capacitor
P R	Plate Resistor	M CAP.	Mylar Capacitor
V R	Variable Resistor	HV CAP.	High Voltage Capacitor
HV R	High Voltage Resistor	MF CAP.	Metalized Film Capacitor
MF R	Metal Film Resistor	MM CAP.	Metalized Mylar Capacitor
MG R	Metal Glazed Resistor	MP CAP.	Metalized Polystyrol Capacitor
MP R	Metal Plate Resistor	PP CAP.	Polypropylene Capacitor
OM R	Metal Oxide Film Resistor	PS CAP.	Polystyrol Capacitor
CMF R	Coating Metal Film Resistor	TF CAP.	Thin Film Capacitor
UNF R	Non-Flammable Resistor	MPP CAP.	Metalized Polypropylene Capacitor
CH V R	Chip Variable Resistor	TAN. CAP.	Tantalum Capacitor
CH MG R	Chip Metal Glazed Resistor	CH C CAP.	Chip Ceramic Capacitor
COMP. R	Composition Resistor	BP E CAP.	Bi-Polar Electrolytic Capacitor
LPTC R	Linear Positive Temperature Coefficient Resistor	CH AL E CAP.	Chip Aluminum Electrolytic Capacitor
		CH AL BP CAP.	Chip Aluminum Bi-Polar Capacitor
		CH TAN. E CAP.	Chip Tantalum Electrolytic Capacitor
		CH AL BP E CAP.	Chip Tantalum Bi-Polar Electrolytic Capacitor

TOLERANCES									
F	G	J	K	M	N	R	H	Z	P
±1%	±2%	±5%	±10%	±20%	±30%	+30% -10%	+50% -10%	+80% -20%	+100% -0%

## CONTENTS

■ USING PW BOARD & REMOTE CONTROL UNIT .....	39
■ EXPLODED VIEW PARTS LIST .....	39, 40
■ EXPLODED VIEW .....	39, 41
■ PRINTED WIRING BOARD PARTS LIST	
● MAIN PW BOARD ASSY .....	42
● BLK PW BOARD ASS'Y .....	44
● POWER & DEF. PW BOARD ASS'Y .....	45
● CRT SOCKET PW BOARD ASS'Y .....	47
● FRONT CONTROL PW BOARD ASSY .....	48
● MICOM PW BOARD ASS'Y [SMF-0M706A] .....	48
● MICOM PW BOARD ASS'Y [SMF-0M707A] .....	50
● MICOM PW BOARD ASS'Y [SMF-0M708A] .....	52
● MICOM PW BOARD ASS'Y [SMF-0M709A] .....	54
● AV SW PW BOARD ASSY .....	56
● 100Hz PW BOARD ASSY .....	57
■ REMOTE CONTROL UNIT PARTS LIST .....	59
■ PACKING .....	60
■ PACKING PARTS LIST .....	61

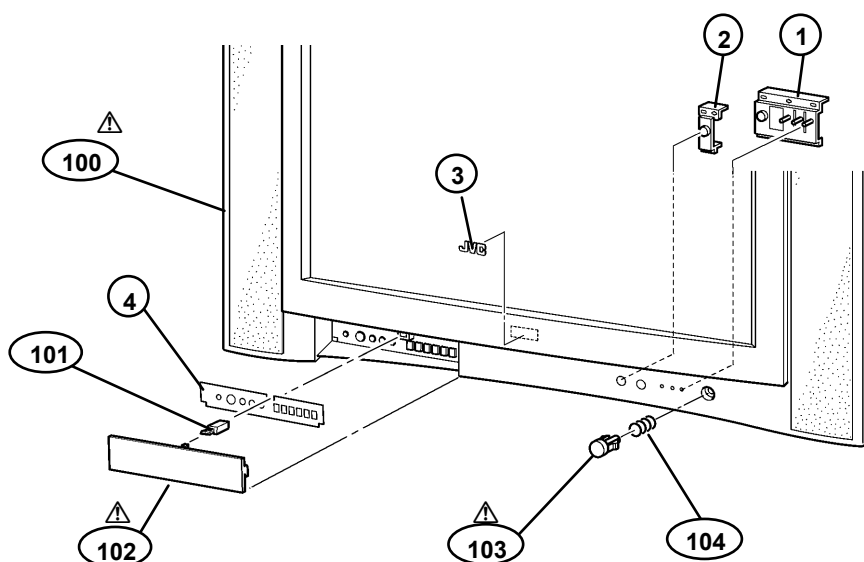
## USING PW BOARD & REMOTE CONTROL UNIT

PWB ASS'Y \ Model	HV-29WZ	HV-29WZ/HK	HV-29WZ/-A	HV-29WZ/AU	HV-29WZ/EE
MAIN PWB	SMF-1702A	←	←	←	←
BLK PWB (Within MAIN PWB)	SMF-0V502A	←	←	←	←
POWER & DEF. PWB	SMF-2702A	←	←	←	←
CRT SOCKET PWB	SMF-3702A	←	←	←	←
FRONT CONTROL PWB	SMF-8701A	←	←	←	←
MICOM PWB	SMF-0M706A	SMF-0M707A	SMF-0M708A	SMF-0M706A	SMF-0M709A
AV SW PWB	SMF-0S701A	←	←	←	←
100Hz PWB	SMF-0Z701A	←	←	←	←
REMOTE CONTROL UNIT	RM-C1030-1H	RM-C1031-2H	RM-C1030-1H	←	←

## EXPLODED VIEW PARTS LIST ( I )

△ Ref.No.	Part No.	Part Name	Description
1	GG30049-002B-H	LED LENS	
2	GG30050-001B-H	REMOCON LENS	
3	LC41037-003A-H	JVC MARK	
4	GG20028-002A-H	OPERATION SHEET	
△ 100	GG10189-003A-H	F.CABINET ASSY	Inc.No.101~104
101	CM48229-00A-C	DOOR LATCH	
△ 102	GG20027-004B-H	DOOR	
△ 103	GG30048-001B-H	POWER KNOB	
104	CM35235-003-H	SPRING	

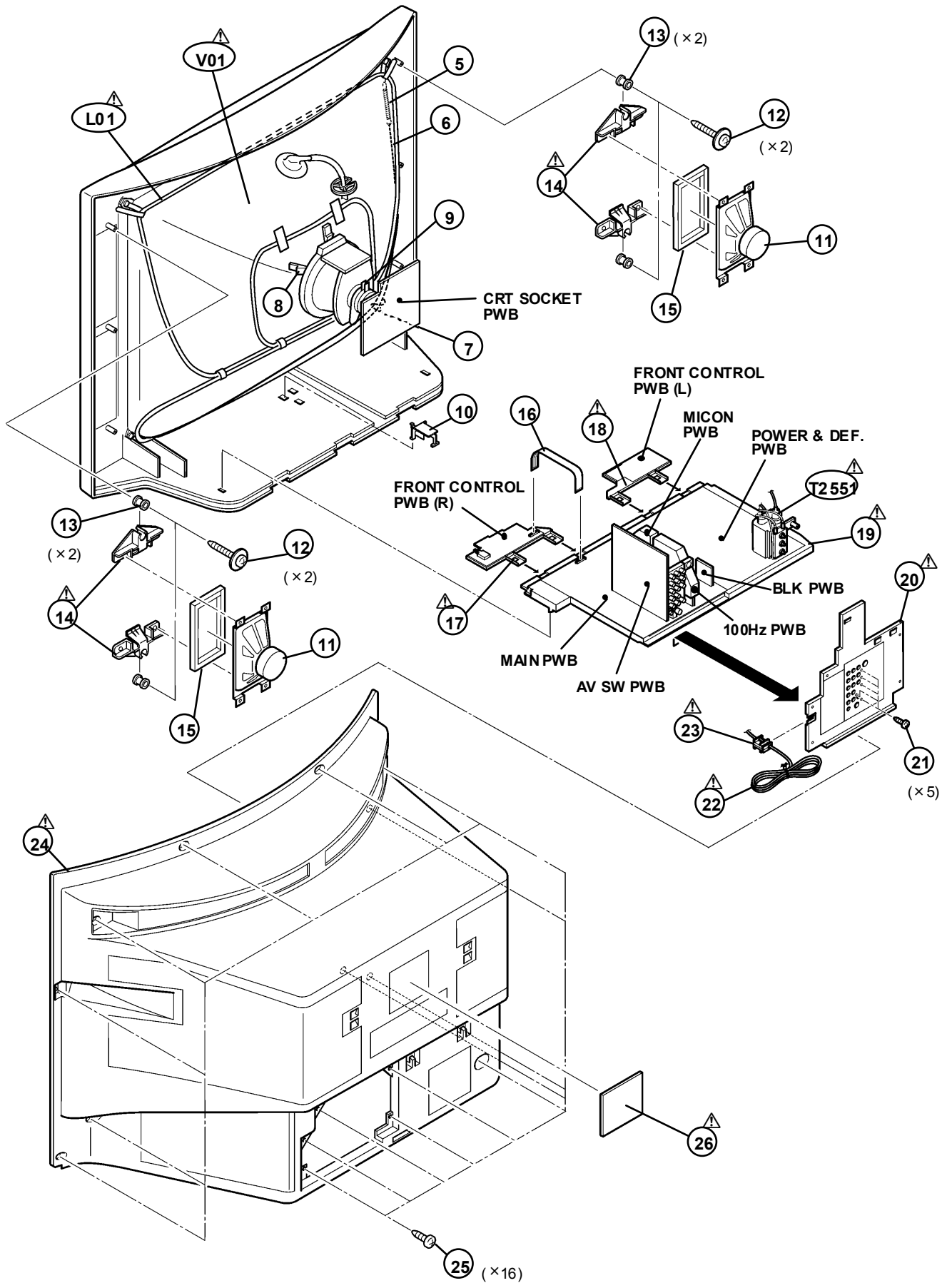
## EXPLODED VIEW ( I )



## EXPLODED VIEW PARTS LIST (Ⅱ)

△ Ref.No.	Part No.	Part Name	Description
△ V01	A68QCU257XV9K	PICTURE TUBE	Inc. DY [HV-29WZ]
△ V01	A68QCU257XV9K	PICTURE TUBE	Inc. DY [HV-29WZ/HK]
△ V01	A68QCU257XV9K	PICTURE TUBE	Inc. DY [HV-29WZ/-A]
△ V01	A68QCU257XV9S	PICTURE TUBE	Inc. DY [HV-29WZ/AU]
△ V01	A68QCU257XV9K	PICTURE TUBE	Inc. DY [HV-29WZ/EE]
△ L01	HCEX0148	DEG COIL	
△ T2551	QQH0098-001	FB TRANSF	With POWER&DEF.PWB
5	A48457-1	SPRING	
6	CHGB0020-0B-N	BRAIDED ASSY	
7	CHGB0017-0C-N	BRAIDED ASSY (SUB)	
8	CE40764-00A	WEDGE ASSY	(×4)
9	CE42730-00A	PC MAGNET	
10	LC30103-001B-H	CHASSIS ADAPTER	
11	QAS0114-001	SPEAKER	(×2) SP01, SP02
12	LC40317-002A-H	TAP SCREW	(×4)
13	LC40226-003A-H	SPACER	
△ 14	GG20023-001B-H	SP HOLDER	(×4)
15	GG30009-009A-H	STICK SHEET	(×2)
16	CHFD125-08BD-N	FFC WIRE	
△ 17	LC11065-001A-H	CONTROL BASE(R)	
△ 18	LC11065-002A-H	CONTROL BASE(L)	
△ 19	LC10764-001A-H	CHASSIS BASE	
△ 20	LC10766-002A-H	AV BOARD	
21	QYSBSF3012M	TAP SCREW	(×5)
△ 22	QMP40D0-200J5	POWER CORD	or QMP40D0-200J3 [HV-29WZ]
△ 22	QMPN050-200-E2	POWER CORD	[HV-29WZ/HK]
△ 22	QMPR010-200-E2	POWER CORD	or QMPR010-200-K2 [HV-29WZ/-A]
△ 22	QMP2980-185J5	POWER CORD	[HV-29WZ/AU]
△ 22	QMP40D0-200J5	POWER CORD	[HV-29WZ/EE]
△ 23	CM23167-A01-H	POWER CORD CLAMP	
△ 24	GG10192-005B-H	REAR COVER	[HV-29WZ]
△ 24	GG10192-006B-H	REAR COVER	[HV-29WZ/HK]
△ 24	GG10192-005B-H	REAR COVER	[HV-29WZ-A]
△ 24	GG10192-006B-H	REAR COVER	[HV-29WZ/AU]
△ 24	GG10192-005A-H	REAR COVER	[HV-29WZ/EE]
25	QYSBSFG4016Z	TAP SCREW	(×16)
△ 26	GG20024-001A-H	RATING LABEL	
--	QQR0491-001	CORE FILTER	

## EXPLODED VIEW ( II )



## PRINTED WIRING BOARD PARTS LIST

## ■ MAIN P.W. BOARD ASS'Y (SMF-1702A)

△ Symbol No.	Part No.	Part Name	Description
--------------	----------	-----------	-------------

## RESISTOR

R1004	NRSA63J-101X	MG R	100Ω 1/16W J
R1005	NRSA63J-101X	MG R	100Ω 1/16W J
R1006	NRSA63J-0R0X	MG R	0.0Ω 1/16W J
R1008	NRSA63J-0R0X	MG R	0.0Ω 1/16W J
R1101	NRSA63J-102X	MG R	1kΩ 1/16W J
R1102	NRSA63J-181X	MG R	180Ω 1/16W J
R1108	NRSA63J-222X	MG R	2.2kΩ 1/16W J
R1104	NRSA63J-102X	MG R	1kΩ 1/16W J
R1105	NRSA63J-331X	MG R	330Ω 1/16W J
R1106	NRSA63J-270X	MG R	270Ω 1/16W J
R1107	NRSA63J-271X	MG R	270Ω 1/16W J
R1108	NRSA63J-102X	MG R	1kΩ 1/16W J
R1109	NRSA63J-101X	MG R	100Ω 1/16W J
R1110	NRSA63J-101X	MG R	100Ω 1/16W J
R1111	NRSA63J-101X	MG R	100Ω 1/16W J
R1301	NRSA63J-101X	MG R	100Ω 1/16W J
R1302	NRSA63J-101X	MG R	100Ω 1/16W J
R1303	NRSA63J-273X	MG R	27kΩ 1/16W J
R1304	NRSA63J-102X	MG R	1kΩ 1/16W J
R1311	NRSA63J-472X	MG R	4.7kΩ 1/16W J
R1312	NRSA63J-273X	MG R	27kΩ 1/16W J
R1313	NRSA63J-183X	MG R	18kΩ 1/16W J
R1314	NRSA63J-221X	MG R	220Ω 1/16W J
R1315	NRSA63J-101X	MG R	100Ω 1/16W J
R1316	NRSA63J-101X	MG R	100Ω 1/16W J
R1317	NRSA63J-101X	MG R	100Ω 1/16W J
R1318	NRSA63J-562X	MG R	5.6kΩ 1/16W J
R1319	NRSA63J-183X	MG R	18kΩ 1/16W J
R1321	NRSA63J-0R0X	MG R	0.0Ω 1/16W J
R1322	NRSA63J-0R0X	MG R	0.0Ω 1/16W J
R1323	NRSA63J-332X	MG R	3.3kΩ 1/16W J
R1324	NRSA63J-332X	MG R	3.3kΩ 1/16W J
R1325	NRSA63J-101X	MG R	100Ω 1/16W J
R1326	NRSA63J-682X	MG R	6.8kΩ 1/16W J
R1401	NRSA63J-102X	MG R	1kΩ 1/16W J
R1402	NRSA63J-102X	MG R	1kΩ 1/16W J
R1403	NRSA63J-331X	MG R	330Ω 1/16W J
R1404	NRSA63J-331X	MG R	330Ω 1/16W J
R1405	NRSA63J-102X	MG R	1kΩ 1/16W J
R1406	NRSA63J-102X	MG R	1kΩ 1/16W J
R1451	NRSA63J-821X	MG R	820Ω 1/16W J
R1454	NRSA63J-472X	MG R	4.7kΩ 1/16W J
R1455	NRSA63J-123X	MG R	12kΩ 1/16W J
R1456	NRSA63J-123X	MG R	12kΩ 1/16W J
R1457	NRSA63J-392X	MG R	3.9kΩ 1/16W J
R1458	NRSA63J-123X	MG R	12kΩ 1/16W J
R1459	NRSA63J-472X	MG R	4.7kΩ 1/16W J
R1461	NRSA63J-123X	MG R	12kΩ 1/16W J
R1462	NRSA63J-153X	MG R	15kΩ 1/16W J
R1463	NRSA63J-124X	MG R	120kΩ 1/16W J
R1465	NRSA63J-224X	MG R	220kΩ 1/16W J
R1466	NRSA63J-224X	MG R	220kΩ 1/16W J
R1467	NRSA63J-563X	MG R	56kΩ 1/16W J
R1468	NRSA63J-224X	MG R	220kΩ 1/16W J
R1469	NRSA63J-683X	MG R	68kΩ 1/16W J
R1470	NRSA63J-223X	MG R	22kΩ 1/16W J
R1471	NRSA63J-273X	MG R	27kΩ 1/16W J
R1472	NRSA63J-682X	MG R	6.8kΩ 1/16W J
R1473	NRSA63J-123X	MG R	12kΩ 1/16W J
R1474	NRSA63J-563X	MG R	56kΩ 1/16W J
R1475	NRSA63J-153X	MG R	15kΩ 1/16W J
R1476	NRSA63J-123X	MG R	12kΩ 1/16W J
R1477	NRSA63J-123X	MG R	12kΩ 1/16W J
R1478	NRSA63J-123X	MG R	12kΩ 1/16W J
R1479	NRSA63J-154X	MG R	150kΩ 1/16W J
R1480	NRSA63J-823X	MG R	82kΩ 1/16W J
R1481	NRSA63J-472X	MG R	4.7kΩ 1/16W J
R1482	NRSA63J-272X	MG R	2.7kΩ 1/16W J
R1483	NRSA63J-472X	MG R	4.7kΩ 1/16W J
R1484	NRSA63J-473X	MG R	47kΩ 1/16W J
R1485	NRSA63J-123X	MG R	12kΩ 1/16W J
R1486	NRSA63J-472X	MG R	4.7kΩ 1/16W J
R1487	NRSA63J-823X	MG R	82kΩ 1/16W J
R1489	NRSA63J-823X	MG R	82kΩ 1/16W J
R1491	NRSA63J-332X	MG R	3.3kΩ 1/16W J

△ Symbol No.	Part No.	Part Name	Description
--------------	----------	-----------	-------------

## RESISTOR

R1492	NRSA63J-562X	MG R	5.6kΩ 1/16W J
R1501	NRSA63J-0R0X	MG R	0.0Ω 1/16W J
R1504	NRSA63J-102X	MG R	1kΩ 1/16W J
R1511	NRSA63J-152X	MG R	1.5kΩ 1/16W J
R1512	NRSA63J-332X	MG R	3.3kΩ 1/16W J
R1521	NRSA63J-223X	MG R	22kΩ 1/16W J
R1522	NRSA63J-562X	MG R	5.6kΩ 1/16W J
R1551	NRSA63J-100X	MG R	10Ω 1/16W J
R1552	NRSA63J-124X	MG R	120kΩ 1/16W J
R1553	NRSA63J-683X	MG R	68kΩ 1/16W J
R1554	NRSA63J-562X	MG R	5.6kΩ 1/16W J
R1555	NRSA63J-333X	MG R	33kΩ 1/16W J
R1556	NRSA63J-472X	MG R	4.7kΩ 1/16W J
R1557	NRSA63J-562X	MG R	5.6kΩ 1/16W J
R1558	NRSA63J-104X	MG R	100kΩ 1/16W J
R1559	NRSA63J-154X	MG R	150kΩ 1/16W J
R1560	NRSA63J-100X	MG R	10Ω 1/16W J
R1561	QRN143J-0R0X	C R	0.0Ω 1/4W J
R1562	NRSA63J-683X	MG R	68kΩ 1/16W J
R1563	NRSA63J-103X	MG R	10kΩ 1/16W J
R1564	NRSA63J-223X	MG R	22kΩ 1/16W J
R1565	NRSA63J-562X	MG R	5.6kΩ 1/16W J
R1574	NRSA63J-101X	MG R	100Ω 1/16W J
R1591	NRSA63J-561X	MG R	560Ω 1/16W J
R1592	NRSA63J-332X	MG R	3.3kΩ 1/16W J
R1595	NRSA63J-222X	MG R	2.2kΩ 1/16W J
R1596	NRSA63J-104X	MG R	100kΩ 1/16W J
R1601	NRSA63J-0R0X	MG R	0.0Ω 1/16W J
R1603	NRSA63J-223X	MG R	22kΩ 1/16W J
R1604	NRSA63J-0R0X	MG R	0.0Ω 1/16W J
R1606	NRSA63J-223X	MG R	22kΩ 1/16W J
R1607	QRK126J-4R7X	C R	4.7Ω 1/2W J
R1608	QRK126J-4R7X	C R	4.7Ω 1/2W J
R1610	NRSA63J-273X	MG R	27kΩ 1/16W J
R1611	NRSA63J-104X	MG R	100kΩ 1/16W J
R1612	NRSA63J-682X	MG R	6.8kΩ 1/16W J
R1613	NRSA63J-103X	MG R	10kΩ 1/16W J
R1614	NRSA63J-104X	MG R	100kΩ 1/16W J
R1615	NRSA63J-472X	MG R	4.7kΩ 1/16W J
R1616	NRSA63J-752X	MG R	7.5kΩ 1/16W J
R1617	NRSA63J-222X	MG R	2.2kΩ 1/16W J
R1618	NRSA63J-103X	MG R	10kΩ 1/16W J
R1619	NRSA63J-683X	MG R	68kΩ 1/16W J
R1620	NRSA63J-333X	MG R	33kΩ 1/16W J
R1623	NRSA63J-222X	MG R	2.2kΩ 1/16W J
R1624	NRSA63J-333X	MG R	33kΩ 1/16W J
R1625	NRSA63J-103X	MG R	10kΩ 1/16W J
R1626	NRSA63J-103X	MG R	10kΩ 1/16W J
R1627	NRSA63J-333X	MG R	33kΩ 1/16W J
R1628	NRSA63J-334X	MG R	330kΩ 1/16W J
R1629	NRSA63J-334X	MG R	330kΩ 1/16W J
R1661	NRSA63J-0R0X	MG R	0.0Ω 1/16W J
R1662	NRSA63J-0R0X	MG R	0.0Ω 1/16W J
R1691	NRSA63J-101X	MG R	100Ω 1/16W J
R1692	NRSA63J-101X	MG R	100Ω 1/16W J
R1772	NRSA63J-221X	MG R	22Ω 1/16W J
R1773	NRSA63J-221X	MG R	22Ω 1/16W J
R1774	NRSA63J-221X	MG R	22Ω 1/16W J
R1775	NRSA63J-221X	MG R	22Ω 1/16W J
R1776	NRSA63J-221X	MG R	22Ω 1/16W J
R1951	QRK126J-560X	C R	56Ω 1/2W J
R1952	QRK126J-1R0X	C R	1.0Ω 1/2W J
R1953	QRX101GJ-4R7	MF R	4.7Ω 1W J

## CAPACITOR

C1001	NCB31HK-222X	C CAP.	2200pF 50V K
C1002	QETN1HM-106Z	E CAP.	10μF 50V M
C1004	NCB31CK-104X	C CAP.	0.1μF 16V K
C1005	QETN1CM-108Z	E CAP.	1000μF 16V M
C1006	NCB31HK-103X	C CAP.	0.01μF 50V K
C1007	QETN1HM-106Z	E CAP.	10μF 50V M
C1008	NCB31CK-104X	C CAP.	0.1μF 16V K
C1009	NRSA63J-0R0X	MG R	0.0Ω 1/16W J

△ Symbol No.	Part No.	Part Name	Description
<b>CAPACITOR</b>			
C1010	QETN1HM-106Z	E CAP.	10μF 50V M
C1011	NCB31CK-104X	C CAP.	0.1μF 16V K
C1101	NCB31CK-104X	C CAP.	0.1μF 16V K
C1102	QETN1HM-106Z	E CAP.	10μF 50V M
C1103	NCB31CK-104X	C CAP.	0.1μF 16V K
C1104	QETN1CM-107Z	E CAP.	100μF 16V M
C1105	QETN1HM-106Z	E CAP.	10μF 50V M
C1106	NCB31CK-104X	C CAP.	0.1μF 16V K
C1107	NCB31CK-104X	C CAP.	0.1μF 16V K
C1111	NDC31HJ-820X	C CAP.	82pF 50V J
C1112	NDC31HJ-470X	C CAP.	47pF 50V J
C1113	NDC31HJ-470X	C CAP.	47pF 50V J
C1114	NDC31HJ-180X	C CAP.	18pF 50V J
C1115	NCB31HK-472X	C CAP.	4700pF 50V K
C1116	NCB31HK-472X	C CAP.	4700pF 50V K
C1117	NCB31HK-103X	C CAP.	0.01μF 50V K
C1118	NCB31HK-103X	C CAP.	0.01μF 50V K
C1119	NDC31HJ-2R0X	C CAP.	2.0pF 50V J
C1120	NDC31HJ-2R0X	C CAP.	2.0pF 50V J
C1121	NCB31HK-103X	C CAP.	0.01μF 50V K
C1122	NDC31HJ-102X	C CAP.	1000pF 50V J
C1123	NDC31HJ-102X	C CAP.	1000pF 50V J
C1124	QETN1HM-106Z	E CAP.	10μF 50V M
C1125	QETN1HM-106Z	E CAP.	10μF 50V M
C1126	NCB31CK-104X	C CAP.	0.1μF 16V K
C1127	QETN1HM-106Z	E CAP.	10μF 50V M
C1128	NCB31CK-104X	C CAP.	0.1μF 16V K
C1129	NCF31AZ-105X	C CAP.	1μF 10V Z
C1130	QETN1HM-106Z	E CAP.	10μF 50V M
C1131	NCB31HK-103X	C CAP.	0.01μF 50V K
C1132	NCB31HK-103X	C CAP.	0.01μF 50V K
C1301	QETN1CM-107Z	E CAP.	100μF 16V M
C1302	NCB31CK-104X	C CAP.	0.1μF 16V K
C1303	NCB31CK-104X	C CAP.	0.1μF 16V K
C1305	NCB31CK-104X	C CAP.	0.1μF 16V K
C1306	NCB31CK-104X	C CAP.	0.1μF 16V K
C1307	NCB31CK-104X	C CAP.	0.1μF 16V K
C1308	NCB31CK-104X	C CAP.	0.1μF 16V K
C1309	NCB31CK-104X	C CAP.	0.1μF 16V K
C1310	QETN1AM-228Z	E CAP.	2200μF 10V M
C1311	NCB31CK-683X	C CAP.	0.068μF 16V K
C1312	NDC31HJ-221X	C CAP.	220pF 50V J
C1313	NCB31HK-223X	C CAP.	0.022μF 50V K
C1314	NCB31HK-223X	C CAP.	0.022μF 50V K
C1315	NCB31HK-223X	C CAP.	0.022μF 50V K
C1316	NCB31HK-103X	C CAP.	0.01μF 50V K
C1317	NCB31HK-103X	C CAP.	0.01μF 50V K
C1318	NCB31HK-103X	C CAP.	0.01μF 50V K
C1320	QETN1JM-228Z	E CAP.	2200μF 6.3V M
C1321	NCB31HK-223X	C CAP.	0.022μF 50V K
C1322	NCB31HK-223X	C CAP.	0.022μF 50V K
C1323	NCB31HK-223X	C CAP.	0.022μF 50V K
C1324	NDC31HJ-820X	C CAP.	82pF 50V J
C1351	QENCL1EM-106Z	BP E CAP.	10μF 25V M
C1401	NCB31CK-104X	C CAP.	0.1μF 16V K
C1402	QETN1CM-107Z	E CAP.	100μF 16V M
C1403	NCB31CK-104X	C CAP.	0.1μF 16V K
C1404	NCB31CK-104X	C CAP.	0.1μF 16V K
C1453	NCB31HK-103X	C CAP.	0.01μF 50V K
C1454	NCB31EK-333X	C CAP.	0.033μF 25V K
C1455	NCB31CK-104X	C CAP.	0.1μF 16V K
C1456	NCB31CK-104X	C CAP.	0.1μF 16V K
C1457	NCB31EK-333X	C CAP.	0.033μF 25V K
C1471	NCB31CK-104X	C CAP.	0.1μF 16V K
C1472	NCB31HK-103X	C CAP.	0.01μF 50V K
C1473	NCB31CK-104X	C CAP.	0.1μF 16V K
C1474	NCB31EK-333X	C CAP.	0.033μF 25V K
C1475	NCB31HK-103X	C CAP.	0.01μF 50V K
C1491	NCB31EK-473X	C CAP.	0.047μF 25V K
C1501	NDC31HJ-150X	C CAP.	15pF 50V J
C1502	NDC31HJ-150X	C CAP.	15pF 50V J
C1551	NCF31CZ-224X	C CAP.	0.22μF 16V Z
C1552	NCF31CZ-224X	C CAP.	0.22μF 16V Z
C1553	QETN1EM-476Z	E CAP.	47μF 25V M
C1554	NCF31CZ-224X	C CAP.	0.22μF 16V Z
C1555	NCF31CZ-224X	C CAP.	0.22μF 16V Z
C1560	QETN1CM-107Z	E CAP.	100μF 16V M
C1561	NDC31HJ-561X	C CAP.	560pF 50V J
C1562	QETN1HM-105Z	E CAP.	1μF 50V M

△ Symbol No.	Part No.	Part Name	Description
<b>CAPACITOR</b>			
C1564	NCB31CK-104X	C CAP.	0.1μF 16V K
C1591	NDC31HJ-561X	C CAP.	560pF 50V J
C1596	NCB31CK-104X	C CAP.	0.1μF 16V K
C1601	QETN1CM-227Z	E CAP.	220μF 16V M
C1602	QETN1CM-227Z	E CAP.	220μF 16V M
C1603	QETN1CM-336Z	E CAP.	33μF 16V M
C1604	QETN1HM-106Z	E CAP.	10μF 50V M
C1605	QETN1HM-107Z	E CAP.	100μF 50V M
C1606	QETN1HM-106Z	E CAP.	10μF 50V M
C1607	NCF21HZ-224X	C CAP.	0.22μF 50V Z
C1608	NCF21HZ-224X	C CAP.	0.22μF 50V Z
C1609	NCF21HZ-224X	C CAP.	0.22μF 50V Z
C1610	NCF21HZ-224X	C CAP.	0.22μF 50V Z
C1611	QETN1HM-107Z	E CAP.	100μF 50V M
C1613	QETN1CM-476Z	E CAP.	47μF 16V M
C1614	NCF31AZ-105X	C CAP.	1μF 10V Z
C1615	QETN1CM-476Z	E CAP.	47μF 16V M
C1616	NCF31AZ-105X	C CAP.	1μF 10V Z
C1617	QETN1HM-105Z	E CAP.	1μF 50V M
C1618	QETN1HM-105Z	E CAP.	1μF 50V M
C1619	QETN1VM-108	E CAP.	1000μF 35V M
C1619	QEHQ1VM-108	E CAP.	1000μF 35V M
C1620	QEHQ1VM-108	E CAP.	1000μF 35V M
C1660	QETN1HM-475Z	E CAP.	4.7μF 50V M
C1661	QETN1HM-475Z	E CAP.	4.7μF 50V M
C1662	NCB31HK-472X	C CAP.	4700pF 50V K
C1663	NCB31EK-104X	C CAP.	0.1μF 25V K
C1664	QETN1HM-475Z	E CAP.	4.7μF 50V M
C1665	NCF21CZ-105X	C CAP.	1μF 16V Z
C1666	NCB31EK-104X	C CAP.	0.1μF 25V K
C1667	QETN1HM-475Z	E CAP.	4.7μF 50V M
C1668	QETN1HM-475Z	E CAP.	4.7μF 50V M
C1669	QETN1HM-107Z	E CAP.	100μF 50V M
C1670	QETN1HM-475Z	E CAP.	4.7μF 50V M
C1671	QETN1HM-475Z	E CAP.	4.7μF 50V M
C1672	QETN1HM-475Z	E CAP.	4.7μF 50V M
C1673	NCB31EK-104X	C CAP.	0.1μF 25V K
C1674	QETN1HM-475Z	E CAP.	4.7μF 50V M
C1675	NCB31EK-104X	C CAP.	0.1μF 25V K
C1676	NCB31HK-472X	C CAP.	4700pF 50V K
C1677	QETN1HM-475Z	E CAP.	4.7μF 50V M
C1678	QETN1HM-475Z	E CAP.	4.7μF 50V M
C1951	QETN1CM-227Z	E CAP.	220μF 16V M
C1952	QETN1CM-477Z	E CAP.	470μF 16V M
C1954	QETN1CM-227Z	E CAP.	220μF 16V M
C1955	QETN1CM-227Z	E CAP.	220μF 16V M

**COIL**

Symbol No.	Part No.	Part Name	Description
L1001	QQL244K-270Z	PACKING COIL	27μH K
L1002	QQL244K-100Z	COIL	10μH K
L1008	QQL244K-100Z	COIL	10μH K
L1004	NQL092K-100X	COIL	10μH K
L1101	QRN143J-0R0X	C R	0.0Ω 1/4W J
L1102	QQL244K-4R7Z	COIL	4.7μH K
L1111	QQL244K-220Z	COIL	22μH K
L1112	QQL244K-180Z	COIL	18μH K
L1301	NQL092K-1R5X	INDUCTOR	1.5μH
L1302	NQL092K-1R5X	INDUCTOR	1.5μH
L1951	IM-BW	BUS WIRE	

**DIODE**

Symbol No.	Part No.	Part Name	Description
D1311	MA3051/M/-X	ZENER DIODE	
D1312	MA3051/M/-X	ZENER DIODE	
D1313	MA3051/M/-X	ZENER DIODE	
D1314	MA111-X	SI DIODE	
D1315	MA111-X	SI DIODE	
D1316	MA111-X	SI DIODE	
D1317	MA111-X	SI DIODE	
D1318	MA111-X	SI DIODE	
D1471	MA111-X	SI DIODE	
D1472	MA111-X	SI DIODE	
D1473	MA111-X	SI DIODE	
D1474	MA111-X	SI DIODE	
D1475	MA3240/M/-X	ZENER DIODE	
D1521	MA111-X	SI DIODE	
D1591	MA111-X	SI DIODE	

△ Symbol No.	Part No.	Part Name	Description
DIODE			
D1592	MA3051M/-X	ZENER DIODE	
D1599	MA111-X	SI DIODE	
D1601	MA111-X	SI DIODE	
D1602	MA111-X	SI DIODE	
D1608	MA3330/L/-X	ZENER DIODE	
D1604	MA3330/L/-X	ZENER DIODE	
D1605	MA111-X	SI DIODE	
D1606	MA111-X	SI DIODE	
D1607	MA111-X	SI DIODE	
D1608	MA3150/M/-X	ZENER DIODE	
D1609	MA3150/M/-X	ZENER DIODE	
D1771	MA3056/M/-X	ZENER DIODE	
D1772	MA3056/M/-X	ZENER DIODE	
D1773	MA3056/M/-X	ZENER DIODE	
D1774	MA3056/M/-X	ZENER DIODE	
D1951	1SR35-400A-T5	SI DIODE	
D1981	MA111-X	SI DIODE	
D1982	MA111-X	SI DIODE	
TRANSISTOR			
Q1101	2SC2412K/QR/-X	SI TRANSISTOR	
Q1102	2SC2412K/QR/-X	SI TRANSISTOR	
Q1301	2SA1037AK/QR/-X	SI TRANSISTOR	
Q1471	2SC2412K/QR/-X	SI TRANSISTOR	
Q1472	2SC2412K/QR/-X	SI TRANSISTOR	
Q1561	2SC2412K/QR/-X	SI TRANSISTOR	
Q1562	2SA1037AK/QR/-X	SI TRANSISTOR	
Q1591	2SA1037AK/QR/-X	SI TRANSISTOR	
Q1592	2SC2412K/QR/-X	SI TRANSISTOR	
Q1601	2SA1037AK/QR/-X	SI TRANSISTOR	
Q1602	2SA1037AK/QR/-X	SI TRANSISTOR	
Q1608	DTC323TK-X	DIGI TRANSISTOR	
Q1604	DTC323TK-X	DIGI TRANSISTOR	
Q1605	2SD601A/QR/-X	SI TRANSISTOR	
Q1606	2SA1037AK/QR/-X	SI TRANSISTOR	
Q1608	2SD601A/QR/-X	SI TRANSISTOR	
IC			
IC1101	MSP3417G-X	IC	
IC1301	SDA9380	IC	
IC1402	BA10324AF-XE	IC	
IC1471	UPC358G2-XE	IC (MONOLITHIC)	
IC1551	LA6515	IC	
IC1601	AN5277	IC	
IC1602	BA4558F-X	IC	
IC1661	HCEX0127	IC	
IC1951	BA17809T	IC	
IC1952	BA17808T	IC	
OTHERS			
CN1001	QGB1505J1-50	B TO B CONNE	
CN1002	QGF1220C2-25	FFC/FPC CONNE	
CN1003	QGB1505J1-50	B TO B CONNE	
CN1004	QGB1506L1-16	B TO B CONNE	
CN1005	QGB1506L1-16	B TO B CONNE	
CN1006	QGB1506L1-16	B TO B CONNE	
CN1007	QGB1505J1-50	B TO B CONNE	
CN1013	QGA2501C1-10	W TO B CONNE	
K1101	NQR0389-003X	FERRITE BEADS	
K1101	NQR0389-003X	FERRITE BEADS	
K1102	NQR0389-003X	FERRITE BEADS	
K1301	NQR0413-003X	FERRITE BEADS	
LC1102	NQR0431-001X	EMI FILTER	
LC1301	NQR0431-001X	EMI FILTER	
LC1302	NQR0431-001X	EMI FILTER	
LC1303	NQR0431-001X	EMI FILTER	
△ TU1001	QAU0197-002	TUNER	
X1101	CE42546-001Z	CRYSTAL	
X1501	QAX0549-001Z	CRYSTAL	
MD1001	-----	BLK PB ASSY	(SMF-0V502A) As Follows

■ BLK P.W. BOARD ASS'Y (SMF-0V502A)

This P.W. Board Ass'y is included in the above main P.W. Board Ass'y.

△ Symbol No.	Part No.	Part Name	Description
RESISTOR			
R0001	NRS463J-104X	MG R	100kΩ 1/16W J
R0002	NRS463J-104X	MG R	100kΩ 1/16W J
R0003	NRS463J-392X	MG R	3.9kΩ 1/16W J
R0004	NRS463J-332X	MG R	3.3kΩ 1/16W J
R0005	NRS463J-103X	MG R	10kΩ 1/16W J
R0006	NRS463J-103X	MG R	10kΩ 1/16W J
R0007	NRS463J-102X	MG R	1kΩ 1/16W J
R0008	NRS463J-102X	MG R	1kΩ 1/16W J
R0009	NRS463J-102X	MG R	1kΩ 1/16W J
CAPACITOR			
C0001	QETN1CM-107Z	E CAP.	100μF 16V M
C0002	NCB31HK-103X	C CAP.	0.01μF 50V K
C0003	NCB31CK-104X	C CAP.	0.1μF 16V K
DIODE			
D0001	NRS463J-0R0X	MG R	0.Ω 1/16W J
TRANSISTOR			
Q0001	2SA1037AK/QR/-X	TRANSISTOR	
Q0002	2SC2412K/QR/-X	TRANSISTOR	
Q0003	2SC2412K/QR/-X	TRANSISTOR	
Q0004	2SC2412K/QR/-X	TRANSISTOR	
IC			
IC0001	UPC358G2-XE	IC	
OTHERS			
CN0016	CH41163-005R	CONNECTOR	



# POWER & DEF. P.W. BOARD ASS'Y (SMF-2702A)

Symbol No.	Part No.	Part Name	Description
<b>RESISTOR</b>			
R2401	QRE141J-562Y	C R	5.6kΩ 1/4W J
R2402	QRE141J-562Y	C R	5.6kΩ 1/4W J
R2403	QRE141J-222Y	C R	2.2kΩ 1/4W J
R2404	QRT01EJ-1R0X	MF R	1.0Ω 1W J
R2405	QRL02EJ-271X	OM R	270Ω 2W J
R2406	QRE141J-222Y	C R	2.2kΩ 1/4W J
R2407	QRX01GJ-1R5	MF R	1.5Ω 1W J
R2408	QRX01GJ-1R5	MF R	1.5Ω 1W J
R2409	QRE141J-823Y	C R	82kΩ 1/4W J
R2410	QRE141J-103Y	C R	10kΩ 1/4W J
R2421	QRE141J-103Y	C R	10kΩ 1/4W J
R2422	QRE141J-684Y	C R	680kΩ 1/4W J
R2461	QRG029J-820	OM R	82Ω 2W J
R2463	QRE141J-682Y	C R	6.8kΩ 1/4W J
R2464	QRT01EJ-3R3X	MF R	3.3Ω 1W J
R2468	QRE141J-102Y	C R	1kΩ 1/4W J
R2469	QRE141J-272Y	C R	2.7kΩ 1/4W J
R2471	QRE141J-391Y	C R	390Ω 1/4W J
R2472	QRA14CF-1002Y	MF R	10kΩ 1/4W F
R2473	QRE141J-473Y	C R	47kΩ 1/4W J
R2474	QRE141J-103Y	C R	10kΩ 1/4W J
R2475	QRE141J-102Y	C R	1kΩ 1/4W J
R2476	QRE141J-102Y	C R	1kΩ 1/4W J
R2477	QRE141J-563Y	C R	56kΩ 1/4W J
R2478	QRE141J-333Y	C R	33kΩ 1/4W J
R2501	QRE141J-471Y	C R	470Ω 1/4W J
R2502	QRE141J-123Y	C R	12kΩ 1/4W J
R2503	QRE121J-152Y	C R	1.5kΩ 1/2W J
R2504	QRL08EJ-272X	OM R	2.7kΩ 3W J
R2505	QRL08EJ-332X	OM R	3.3kΩ 3W J
R2506	QRE121J-5R6Y	C R	5.6Ω 1/2W J
R2521	QRE121J-471Y	C R	470Ω 1/2W J
R2522	QRE141J-223Y	C R	22kΩ 1/4W J
R2523	QRE141J-103Y	C R	10kΩ 1/4W J
R2524	QRC121K-152Z	COMP. R	1.5kΩ 1/2W K
R2541	QRE141J-182Y	C R	1.8kΩ 1/4W J
R2542	QRE141J-222Y	C R	2.2kΩ 1/4W J
R2543	QRE121J-272Y	C R	2.7kΩ 1/2W J
△ R2551	QRZ9022-R47	F R	0.47 Ω 1W K
△ R2552	QRZ9022-R47	F R	0.47 Ω 1W K
△ R2555	QRZ9022-R82	F R	0.82 Ω 1W K
R2561	QRL01EJ-220X	OM R	22Ω 1W J
R2562	QRE121J-123Y	C R	12kΩ 1/2W J
R2563	QRZ0056-103Z	COMP R	10kΩ 1/2W K
R2564	QRE121J-184Y	C R	180kΩ 1/2W J
R2565	QRE121J-184Y	C R	180kΩ 1/2W J
R2566	QRE121J-184Y	C R	180kΩ 1/2W J
R2567	QRE121J-184Y	C R	180kΩ 1/2W J
R2568	QRE121J-184Y	C R	180kΩ 1/2W J
R2569	QRE141J-183Y	C R	18kΩ 1/4W J
R2570	QRE141J-103Y	C R	10kΩ 1/4W J
R2571	QRE141J-822Y	C R	8.2kΩ 1/4W J
R2572	QRE141J-183Y	C R	18kΩ 1/4W J
R2573	QRE141J-183Y	C R	18kΩ 1/4W J
R2574	QRE141J-392Y	C R	3.9kΩ 1/4W J
R2575	QRE141J-152Y	C R	1.5kΩ 1/4W J
R2581	QRF154K-4R7	UNF R	4.7Ω 15W K
R2582	QRE141J-681Y	C R	680Ω 1/4W J
R2583	QRE121J-682Y	C R	6.8kΩ 1/2W J
R2584	QRE141J-183Y	C R	18kΩ 1/4W J
R2585	QRE141J-222Y	C R	2.2kΩ 1/4W J
R2902	QRF054K-3R3	UNF R	3.3Ω 5W K
R2903	QRF154K-1R8	UNF R	1.8Ω 15W K
R2904	QRL089J-683	OM R	68kΩ 3W J
R2905	QRE121J-394Y	C R	390kΩ 1/2W J
R2906	QRE121J-394Y	C R	390kΩ 1/2W J
R2907	QRE141J-273Y	C R	27kΩ 1/4W J
R2908	QRL089J-823	OM R	82kΩ 3W J
R2909	QRL089J-823	OM R	82kΩ 3W J
△ R2910	QRZ9017-4R7	F R	4.7 Ω 1/4W J
R2911	QRE121J-122Y	C R	1.2kΩ 1/2W J
R2912	QRE141J-152Y	C R	1.5kΩ 1/4W J
R2913	QRT02EJ-R27X	MF R	0.27Ω 2W J
R2914	QRMO59J-R10	MP R	0.10Ω 5W J
R2915	QRE121J-681Y	C R	680Ω 1/2W J
R2916	QRE121J-332Y	C R	3.3kΩ 1/2W J
△ R2932	QRZ9017-330	F R	33 Ω 1/4W J
R2934	QRE121J-474Y	C R	470kΩ 1/2W J
R2935	QRE141J-332Y	C R	3.3kΩ 1/4W J

Symbol No.	Part No.	Part Name	Description
<b>RESISTOR</b>			
R2936	QRX01GJ-4R7	MF R	4.7Ω 1W J
R2937	QRE121J-681Y	C R	680Ω 1/2W J
R2941	QRE121J-330Y	C R	33Ω 1/2W J
R2942	QRE141J-682Y	C R	6.8kΩ 1/4W J
R2943	QRE141J-473Y	C R	47kΩ 1/4W J
R2944	QRE141J-103Y	C R	10kΩ 1/4W J
R2945	QRE141J-563Y	C R	56kΩ 1/4W J
R2946	QRE141J-332Y	C R	3.3kΩ 1/4W J
R2949	QRE141J-101Y	C R	10Ω 1/4W J
R2950	QRE141J-221Y	C R	22Ω 1/4W J
R2951	QRE121J-102Y	C R	1kΩ 1/2W J
R2952	QRL08EJ-223X	OM R	22kΩ 3W J
R2953	QRE141J-474Y	C R	470kΩ 1/4W J
R2954	QRE141J-103Y	C R	10kΩ 1/4W J
R2955	QRT029J-1R0	MF R	1.0Ω 2W J
R2957	QRT089J-3R9	MF R	3.9Ω 3W J
R2981	QRE141J-153Y	C R	15kΩ 1/4W J
R2982	QRE141J-102Y	C R	1kΩ 1/4W J
△ R2991	QRZ0057-825	C R	8.2MΩ 1W J

## CAPACITOR

C2403	QFLC2AJ-104Z	M CAP.	0.1μF 100V J
C2404	QCZ0120-104Z	C CAP.	0.1μF 25V Z
C2405	QDC31HJ-820Z	C CAP.	82pF 50V J
C2406	QETMLVM-108	E CAP.	1000μF 35V M
C2408	QETNLVM-107Z	E CAP.	100μF 35V M
C2409	QFV71HJ-474Z	MF CAP.	0.47μF 50V J
C2410	QFV71HJ-474Z	MF CAP.	0.47μF 50V J
C2411	QFLC2AJ-104Z	M CAP.	0.1μF 100V J
C2414	QCB31HK-682Z	C CAP.	6800pF 50V K
C2415	QETNLVM-107Z	E CAP.	100μF 35V M
C2421	QETNLHM-105Z	E CAP.	1μF 50V M
C2461	QEZO14-226	E CAP.	22μF 50V M
C2462	QFM72DJ-152Z	M CAP.	1500pF 200V J
C2463	QFM72DJ-122Z	M CAP.	1200pF 200V J
C2464	QCZ0120-104Z	C CAP.	0.1μF 25V Z
C2465	QETNLHM-106Z	E CAP.	10μF 50V M
C2466	QFP31HJ-272Z	PP CAP.	2700pF 50V J
C2467	QFLC1HJ-102Z	M CAP.	1000pF 50V J
C2468	QETNLEM-476Z	E CAP.	47μF 25V M
C2470	QCS31HJ-470Z	C CAP.	47pF 50V J
C2471	QFLC1HJ-103Z	M CAP.	0.01μF 50V J
C2501	QCB32HK-331Z	C CAP.	330pF 500V K
C2502	QFM72DK-103	M CAP.	0.01μF 200V K
C2503	QFV71HJ-224Z	MF CAP.	0.22μF 50V J
△ C2520	QFZ0200-112	MPP CAP.	1100pF1.5kVH±3%
△ C2521	QFZ0200-112	MPP CAP.	1100pF1.5kVH±3%
△ C2522	QFZ0200-133	MPP CAP.	0.013μF1.5kVH±3%
C2523	QFM72DK-183	M CAP.	0.018μF 200V K
△ C2524	QFP32JJ-223	PP CAP.	0.022μF 630V J
△ C2526	QFZ0197-104	MPP CAP.	0.1μF 250V J
△ C2527	QFZ0197-154	MPP CAP.	0.15μF 250V J
△ C2528	QFZ0197-104	MPP CAP.	0.1μF 250V J
△ C2529	QFZ0197-154	MPP CAP.	0.15μF 250V J
C2530	QCB32HK-561Z	C CAP.	560pF 500V K
△ C2531	QFZ0197-534	MPP CAP.	0.53μF 250V J
C2532	QETM2CM-227	E CAP.	220μF 160V M
C2541	QENCLHM-105Z	E CAP.	1μF 50V M
C2551	QCB32HK-152Z	C CAP.	1500pF 500V K
C2552	QETNLEM-108Z	E CAP.	1000μF 25V M
C2553	QCB32HK-152Z	C CAP.	1500pF 500V K
C2554	QETNLHM-108Z	E CAP.	1000μF 16V M
C2555	QCB32HK-102Z	C CAP.	1000pF 500V K
C2556	QETM2EM-106	E CAP.	10μF 250V M
C2558	QETNLHM-477Z	E CAP.	470μF 16V M
C2559	QEHRLCM-227Z	E CAP.	220μF 16V M
C2561	QFLC2AJ-153Z	M CAP.	0.015μF 100V J
△ C2563	QFZ0122-682	MPP CAP.	6800pF1.8kVH±3%
C2564	QCZ0122-471	C CAP.	470pF 2kV K
C2565	QCZ0122-471	C CAP.	470pF 2kV K
△ C2566	QFZ0200-512	MPP CAP.	5100pF1.5kVH±3%
C2567	QFLC1HJ-563Z	M CAP.	0.056μF 50V J
C2568	QETNLVM-476Z	E CAP.	47μF 35V M
C2581	QETNLHM-107Z	E CAP.	100μF 16V M
C2582	QETNLEM-476Z	E CAP.	47μF 25V M
△ C2902	QFZ9075-104	MPP CAP.	0.1μFAC275V M
△ C2903	QFZ9075-473	MPP CAP.	0.047μFAC275V M
△ C2904	QCZ9054-472	C CAP.	4700pFAC250V Z

Symbol No.	Part No.	Part Name	Description
------------	----------	-----------	-------------

**CAPACITOR**

△ C2905	QC29054-472	C CAP.	4700pFAC250V Z
△ C2906	QC29054-472	C CAP.	4700pFAC250V Z
C2907	QE20371-397	E CAP.	390μF 400V M
C2908	QCB32HK-103	C CAP.	0.01μF 500V K
C2909	QC20340-391	C CAP.	390pF 2kV K
C2910	QETN1HM-476Z	E CAP.	47μF 50V M
C2911	QCB31HK-272Z	C CAP.	2700pF 50V K
C2912	QC20340-561	C CAP.	560pF 2kV K
C2914	QCB31HK-471Z	C CAP.	470pF 50V K
C2915	QFLC1HJ-332Z	M CAP.	3300pF 50V J
C2916	QCB32HK-152Z	C CAP.	1500pF 500V K
C2931	QC29054-472	C CAP.	4700pFAC250V Z
C2932	QC29054-472	C CAP.	4700pFAC250V Z
C2933	QC29054-472	C CAP.	4700pFAC250V Z
C2934	QETM2GM-226	E CAP.	22μF 400V M
C2936	QC20340-151	C CAP.	150pF 2kV K
C2937	QETN1HM-475Z	E CAP.	4.7μF 50V M
C2939	QFLC1HJ-103Z	M CAP.	0.01μF 50V J
C2940	QCB31HK-471Z	C CAP.	470pF 50V K
C2941	QETN1AM-108Z	E CAP.	1000μF 10V M
C2943	QETN1CM-107Z	E CAP.	100μF 16V M
C2951	QE20203-227	E CAP.	220μF 160V M
C2952	QTHM1EM-228	E CAP.	2200μF 25V M
C2955	QETM1VM-228	E CAP.	2200μF 35V M
C2956	QETM1EM-338	E CAP.	3300μF 25V M
C2959	QFV71HJ-684Z	MF CAP.	0.68μF 50V J
C2960	QC20131-821	C CAP.	820pF 2kV K
C2972	QETN1CM-477Z	E CAP.	470μF 16V M
C2974	QETN1AM-227Z	E CAP.	220μF 10V M
C2976	QETN1CM-477Z	E CAP.	470μF 16V M
C2978	QETN1AM-227Z	E CAP.	220μF 10V M
△ C2998	QC29079-471	C CAP.	470pFAC250V K
△ C2995	QC29079-102	C CAP.	1000pFAC250V M

**TRANSF**

T2501	QQR0882-001	DRIVE TRANSF
△ T2551	QQH0098-001	FB TRANSF
T2561	QQR1096-001	DEF TRANSF
△ T2901	HCEX0147	TRANSFORMER
△ T2931	HCEX0146	TRANSFORMER

**COIL**

L2461	QQR1195-001	CHOKE COIL	
L2462	QQL2028-272	INDUCTOR	
L2521	QQL2031-180	INDUCTOR	
L2522	QQR1196-001	LINEARITY COIL	
L2552	QQL26AK-220Z	COIL	22μH K
L2561	QQL2028-272	INDUCTOR	
L2951	QQL2026-460	INDUCTOR	
L2952	IM-BW	BUS WIRE	
L2954	IM-BW	BUS WIRE	
L2955	IM-BW	BUS WIRE	
L2959	QQL26AK-220Z	COIL	22μH K
L2960	QQL26AK-220Z	COIL	22μH K

**DIODE**

D2402	1SR35-400A-T2	SI DIODE
D2408	1SR35-400A-T2	SI DIODE
D2421	1SS133-T2	SI DIODE
D2461	EU2-T3	SI DIODE
D2462	1SS133-T2	SI DIODE
D2463	1SS133-T2	SI DIODE
D2501	1SS81-T5	SI DIODE
D2521	V11CA-C1	SI DIODE
D2522	FMV-3FU-F1	SI DIODE
D2523	MTZJ22B-T2	ZENER DIODE
D2541	EU2-T3	SI DIODE
D2542	MTZJ3-9B-T2	ZENER DIODE
D2551	EU2-T3	SI DIODE
D2552	EU2-T3	SI DIODE
D2553	RH1S-T3	SI DIODE
D2554	RH1S-T3	SI DIODE
D2561	ES1F-LFG2	SI DIODE
D2562	ES1F-LFG2	SI DIODE
D2582	MTZJ7-5B-T2	ZENER DIODE
△ D2901	D35B60	BRIDGE DIODE
D2902	RG1C-LFA1	SI DIODE

Symbol No.	Part No.	Part Name	Description
------------	----------	-----------	-------------

**DIODE**

D2903	MTZJ6-8C-T2	ZENER DIODE
D2904	AU01Z-T2	FR DIODE
D2905	AU01Z-T2	FR DIODE
D2906	MTZJ27B-T2	ZENER DIODE
D2907	1SS133-T2	SI DIODE
D2908	1SS133-T2	SI DIODE
D2909	IM-BW	BUS WIRE
D2910	MTZJ15B-T2	ZENER DIODE
D2911	1SS133-T2	SI DIODE
D2912	MTZJ27B-T2	ZENER DIODE
D2931	S1WB/A/60-4101	BRIDGE DIODE
D2933	AU01Z-T2	FR DIODE
D2934	MTZJ27B-T2	ZENER DIODE
D2941	RGP10J-5025-T3	SI DIODE
D2943	MTZJ7-5B-T2	ZENER DIODE
D2944	MTZJ3-9B-T2	ZENER DIODE
D2945	1SS133-T2	SI DIODE
D2947	1SS133-T2	SI DIODE
D2948	1SS133-T2	SI DIODE
D2951	RU4B-F1	SI DIODE
D2952	FMX-G12S	SI DIODE
D2953	RU4B-F1	SI DIODE
D2955	FMX-G12S	SI DIODE
D2956	FMX-G12S	SI DIODE
D2957	IM-BW	BUS WIRE
D2958	MTZJ33B-T2	ZENER DIODE
D2961	1SR35-400A-T2	SI DIODE
D2981	1SS133-T2	SI DIODE
D2984	1SS133-T2	SI DIODE
D2985	1SS133-T2	SI DIODE

**TRANSISTOR**

Q2421	DTC124ESA-T	DIGI TRANSISTOR	
Q2422	2SC1740S/QR/-T	SI TRANSISTOR	
Q2461	2SK2459N-F54	F. E. T	
Q2462	2SC1740S/QR/-T	SI TRANSISTOR	
Q2463	2SC1740S/QR/-T	SI TRANSISTOR	
Q2464	2SA933AS/QR/-T	SI TRANSISTOR	
Q2501	BSN304-T	F. E. T	
△ Q2521	2SC9905-RL	SI TRANSISTOR	H. OUT
Q2561	2SC1740S/QR/-T	SI TRANSISTOR	
Q2562	2SC1740S/QR/-T	SI TRANSISTOR	
Q2563	2SC4686A	SI TRANSISTOR	
Q2581	2SA1208/ST/Z1-T	SI TRANSISTOR	
Q2582	DTC144ESA-T	DIGI TRANSISTOR	
Q2941	2SC1740S/QR/-T	SI TRANSISTOR	
Q2942	2SC1740S/QR/-T	SI TRANSISTOR	
Q2943	2SC1740S/QR/-T	SI TRANSISTOR	

**IC**

IC2401	LA7876NZ	IC
IC2461	BA10893	IC
IC2551	BA12T	IC
IC2901	STR-F6658B/F7	IC
IC2931	HCEX0145	I C
IC2951	SE140N	IC
IC2954	BA17805T	IC
IC2955	BA033T	IC

**OTHERS**

CN2004	QGB1506M1-16	B TO B CONNE	
CN2005	QGB1506M1-16	B TO B CONNE	
CN2006	QGB1506M1-16	B TO B CONNE	
CN2014	QGA2501C5-06Z	W TO B CONNE	
△ CP2911	QMF2043-2R0Z-J1	FUSE	2.0A
△ CP2915	ICP-N25-Y	IC PROTECTOR	
△ CP2955	QMF2034-4R0Z-J1	FUSE	4.0A
△ CP2956	QMF2034-4R0Z-J1	FUSE	4.0A
K2401	QQR0621-002Z	FERRITE BEADS	
K2522	CE41832-001	LEAD CORE	
K2523	CE41832-001	LEAD CORE	
K2524	CE41832-001	LEAD CORE	
K2901	QQR0679-001	FERRITE BEADS	
K2952	QQR0621-002Z	FERRITE BEADS	
△ LF2901	QQR1253-001	LINE FILTER	
△ PC2901	PC123F2	IC(PHOTO COUPLE	
△ PC2981	PC123F2	IC(PHOTO COUPLE	
△ RY2901	QSK0061-001	RELAY	
△ RY2981	QSK0090-001	RELAY	
△ TH2901	QAO134-4RS	P THERMISTOR	

# ■ CRT SOCKET P.W. BOARD ASS'Y (SMF-3702A)

△ Symbol No. Part No. Part Name Description

## RESISTOR

R3101	NRS463J-123X	MG R	12kΩ	1/16W	J
R3102	NRS463J-681X	MG R	680Ω	1/16W	J
R3103	NRS463J-101X	MG R	100Ω	1/16W	J
R3104	NRS463J-332X	MG R	3.3kΩ	1/16W	J
R3105	NRS463J-102X	MG R	1kΩ	1/16W	J
R3106	NRS463J-221X	MG R	220Ω	1/16W	J
R3107	NRS463J-561X	MG R	560Ω	1/16W	J
R3108	QRE121J-100Y	C R	10Ω	1/2W	J
R3109	NRS463J-123X	MG R	12kΩ	1/16W	J
R3110	NRS463J-332X	MG R	3.3kΩ	1/16W	J
R3111	NRS463J-182X	MG R	1.8kΩ	1/16W	J
R3112	NRS463J-272X	MG R	2.7kΩ	1/16W	J
R3113	NRS463J-102X	MG R	1kΩ	1/16W	J
R3114	NRS463J-152X	MG R	1.5kΩ	1/16W	J
R3115	NRS463J-680X	MG R	680Ω	1/16W	J
R3117	NRS463J-391X	MG R	390Ω	1/16W	J
R3122	NRS463J-122X	MG R	1.2kΩ	1/16W	J
R3123	QRE121J-563Y	C R	56kΩ	1/2W	J
R3124	NRS463J-470X	MG R	470Ω	1/16W	J
R3125	QRE121J-563Y	C R	56kΩ	1/2W	J
R3126	NRS463J-470X	MG R	470Ω	1/16W	J
R3127	NRS463J-122X	MG R	1.2kΩ	1/16W	J
R3128	NRS463J-390X	MG R	390Ω	1/16W	J
R3129	QRE121J-2R7Y	C R	2.7Ω	1/2W	J
R3130	QRE121J-2R7Y	C R	2.7Ω	1/2W	J
R3131	NRS463J-390X	MG R	390Ω	1/16W	J
R3132	NRS463J-121X	MG R	120Ω	1/16W	J
R3133	QRL029J-681	OM R	680Ω	2W	J
△ R3134	QRZ021J-561	F R	560 Ω	1W	J
R3204	NRS463J-272X	MG R	2.7kΩ	1/16W	J
R3205	NRS463J-272X	MG R	2.7kΩ	1/16W	J
R3206	NRS463J-272X	MG R	2.7kΩ	1/16W	J
R3211	NRS463J-154X	MG R	150kΩ	1/16W	J
R3223	NRS463J-272X	MG R	2.7kΩ	1/16W	J
R3224	NRS463J-272X	MG R	2.7kΩ	1/16W	J
R3225	NRS463J-272X	MG R	2.7kΩ	1/16W	J
R3227	NRS463J-103X	MG R	10kΩ	1/16W	J
R3228	NRS463J-272X	MG R	2.7kΩ	1/16W	J
R3229	QRL029J-104-M	OM R	100kΩ	2W	J
R3230	QRL029J-104-M	OM R	100kΩ	2W	J
R3231	QRL029J-104-M	OM R	100kΩ	2W	J
R3232	NRS463J-332X	MG R	3.3kΩ	1/16W	J
R3233	NRS463J-332X	MG R	3.3kΩ	1/16W	J
R3234	NRS463J-332X	MG R	3.3kΩ	1/16W	J
R3235	QRC121K-152Z	COMP. R	1.5kΩ	1/2W	K
R3236	QRC121K-152Z	COMP. R	1.5kΩ	1/2W	K
R3237	QRC121K-152Z	COMP. R	1.5kΩ	1/2W	K
R3239	QRZ0107-474Z	C R	470kΩ	1/2W	K
△ R3241	QRZ0107-105Z	C R	1.0MΩ	1/2W	K
R3242	NRS463J-103X	MG R	10kΩ	1/16W	J
R3244	NRS463J-102X	MG R	1kΩ	1/16W	J
R3245	NRS463J-562X	MG R	5.6kΩ	1/16W	J
R3246	NRS463J-562X	MG R	5.6kΩ	1/16W	J
R3247	NRS463J-562X	MG R	5.6kΩ	1/16W	J
R3301	QRE121J-474Y	C R	470kΩ	1/2W	J
R3302	QRE121J-474Y	C R	470kΩ	1/2W	J
R3303	NRS463J-223X	MG R	22kΩ	1/16W	J
R3304	NRS463J-223X	MG R	22kΩ	1/16W	J
R3305	NRS463J-562X	MG R	5.6kΩ	1/16W	J
R3306	NRS463J-392X	MG R	3.9kΩ	1/16W	J
R3310	NRS463J-0R0X	MG R	0.0Ω	1/16W	J

## CAPACITOR

C3102	NDC31HJ-3R0X	C CAP.	3.0pF	50V	J
C3103	NDC31HJ-121X	C CAP.	120pF	50V	J
C3104	QCB31HK-103Z	C CAP.	0.01μF	50V	K
C3106	QETN1CM-335Z	E CAP.	3.3μF	50V	M
C3107	QETN1CM-107Z	E CAP.	100μF	16V	M
C3110	QETN2CM-106Z	E CAP.	10μF	160V	M
C3111	QCB32HK-472Z	C CAP.	4700pF	500V	K
C3113	QETN2CM-106Z	E CAP.	10μF	160V	M
C3114	QCB32HK-472Z	C CAP.	4700pF	500V	K
C3116	QETN1AM-107Z	E CAP.	100μF	10V	M
C3117	QETN1AM-107Z	E CAP.	100μF	10V	M
C3118	QETN1AM-337Z	E CAP.	330μF	10V	M
C3120	NCB31HK-222X	C CAP.	2200pF	50V	K
C3121	NDC31HJ-221X	C CAP.	220pF	50V	J
C3123	NCB31HK-222X	C CAP.	2200pF	50V	K

△ Symbol No. Part No. Part Name Description

## CAPACITOR

C3202	NDC31HJ-100X	C CAP.	10pF	50V	J
C3203	NDC31HJ-100X	C CAP.	10pF	50V	J
C3204	NCF31CZ-104X	C CAP.	0.1μF	16V	Z
C3205	NCF31CZ-104X	C CAP.	0.1μF	16V	Z
C3206	NCF31CZ-104X	C CAP.	0.1μF	16V	Z
C3207	QETN1EM-476Z	E CAP.	47μF	25V	M
C3208	QETN1EM-476Z	E CAP.	47μF	25V	M
C3209	QETN1EM-476Z	E CAP.	47μF	25V	M
C3210	QFK62EK-104Z	MM CAP.	0.1μF	250V	K
C3211	QFK62EK-104Z	MM CAP.	0.1μF	250V	K
C3212	QFK62EK-104Z	MM CAP.	0.1μF	250V	K
C3213	NDC31HJ-181X	C CAP.	180pF	50V	J
C3214	NDC31HJ-181X	C CAP.	180pF	50V	J
C3215	NDC31HJ-181X	C CAP.	180pF	50V	J
C3216	QETN1CM-107Z	E CAP.	100μF	16V	M
C3218	QETN2EM-336	E CAP.	33μF	250V	M
C3219	QFZ0097-223	MM CAP.	0.022μF	1250V	K
C3221	QETN2EM-106	E CAP.	10μF	250V	M
C3222	NDC31HJ-181X	C CAP.	180pF	50V	J
C3302	QETN1AM-477Z	E CAP.	470μF	10V	M

## COIL

L3101	QQL244K-5R6Z	COIL	5.6μH	K
L3201	QQL244K-4R7Z	COIL	4.7μH	K
L3202	QQL244K-4R7Z	COIL	4.7μH	K
L3203	QQL244K-4R7Z	COIL	4.7μH	K
L3204	QQL26AJ-102Z	COIL	1mH	J

## DIODE

D3101	MA111-X	SI DIODE		
D3102	MA111-X	SI DIODE		
D3103	RH1S-T3	SI DIODE		
D3104	RH1S-T3	SI DIODE		
D3105	NRS463J-0R0X	MG R	0.0Ω	1/16W J
D3204	EU01N-T2	SI DIODE		
D3205	EU01N-T2	SI DIODE		
D3206	EU01N-T2	SI DIODE		
D3207	IM-BW	BUS WIRE		
D3208	1SR124-400A-T2	SI DIODE		
D3209	1SR124-400A-T2	SI DIODE		
D3210	1SR124-400A-T2	SI DIODE		
D3211	MA3062/M/-X	ZENER DIODE		
D3212	MA3130/H/-X	ZENER DIODE		
D3213	MA3130/H/-X	ZENER DIODE		
D3214	MA3130/H/-X	ZENER DIODE		
D3301	MA111-X	SI DIODE		
D3303	MA111-X	SI DIODE		

## TRANSISTOR

Q3101	2SC2412K/QR/-X	SI TRANSISTOR		
Q3102	2SA1037AK/QR/-X	SI TRANSISTOR		
Q3103	2SC1906-T	SI TRANSISTOR		
Q3104	2SC2412K/QR/-X	SI TRANSISTOR		
Q3105	2SC1740S/QR/-T	SI TRANSISTOR		
Q3108	2SA1837	SI TRANSISTOR		
Q3109	2SC4793	SI TRANSISTOR		
Q3301	2SA1037AK/QR/-X	SI TRANSISTOR		

## IC

IC3201	TDA6111Q	IC		
IC3202	TDA6111Q	IC		
IC3203	TDA6111Q	IC		

## OTHERS

CN3013	CHGY0146-0A-G	CONNECTOR ASSY		
CN3014	QJK002-063631	CONNECTOR		
K3101	CE41492-001Z	CHOKE COIL		
K3103	CE41492-001Z	CHOKE COIL		
K3104	CE41492-001Z	CHOKE COIL		
K3105	QOR0621-002Z	FERRITE BEADS		
SG3201	QAF0056-501Z	VARISTOR		
SG3202	QAF0056-501Z	VARISTOR		
SG3203	QAF0056-501Z	VARISTOR		
△ SK3001	QNZ0380-001	C.R.T. SOCKET		

# ■ FRONT CONTROL P.W. BOARD ASS'Y (SMF-8701A)

△ Symbol No.	Part No.	Part Name	Description
<b>RESISTOR</b>			
R8001	QRE121J-101Y	C R	100Ω 1/2W J
R8002	QRE121J-101Y	C R	100Ω 1/2W J
R8003	NRSΛ63J-102X	MG R	1kΩ 1/16W J
R8004	NRSΛ63J-222X	MG R	2.2kΩ 1/16W J
R8005	NRSΛ63J-221X	MG R	220Ω 1/16W J
R8006	NRSΛ63J-182X	MG R	1.8kΩ 1/16W J
R8007	NRSΛ63J-103X	MG R	10kΩ 1/16W J
R8008	NRSΛ63J-102X	MG R	1kΩ 1/16W J
R8010	NRSΛ63J-103X	MG R	10kΩ 1/16W J
R8012	NRSΛ63J-103X	MG R	10kΩ 1/16W J
R8013	NRSΛ63J-103X	MG R	10kΩ 1/16W J
R8020	NRSΛ63J-822X	MG R	8.2kΩ 1/16W J
R8021	NRSΛ63J-102X	MG R	1kΩ 1/16W J
R8022	NRSΛ63J-102X	MG R	1kΩ 1/16W J
R8035	QRE121J-151Y	C R	150Ω 1/2W J
R8036	NRSΛ63J-561X	MG R	560Ω 1/16W J
R8038	NRSΛ63J-182X	MG R	1.8kΩ 1/16W J
R8039	NRSΛ63J-331X	MG R	330Ω 1/16W J

<b>CAPACITOR</b>			
C8001	NCB31HK-103X	C CAP.	0.01μF 50V K
C8002	NCB31HK-103X	C CAP.	0.01μF 50V K
C8003	QETN1HM-106Z	E CAP.	10μF 50V M
C8004	NCB31CK-104X	C CAP.	0.1μF 16V K
C8010	NCB31HK-472X	C CAP.	4700pF 50V K
C8011	NCB31HK-472X	C CAP.	4700pF 50V K
C8019	QETN1CM-107Z	E CAP.	100μF 16V M
C8022	QETN1EM-476Z	E CAP.	47μF 25V M
△ C8901	QFZ9040-474	MF CAP.	0.47μFAC275V M

<b>DIODE</b>			
D8001	MA111-X	SI DIODE	
D8002	MA111-X	SI DIODE	
D8003	MA111-X	SI DIODE	
D8004	MA111-X	SI DIODE	
D8005	MA111-X	SI DIODE	
D8006	MA111-X	SI DIODE	
D8007	P1241-04	CDS	
D8008	MA111-X	SI DIODE	
D8009	SLR-342MG-TL6	LED (GRN)	
D8010	SPR-39MVMF	LED	
D8011	MA111-X	SI DIODE	
D8013	SLR-342YY-T16	LED (YLW)	
D8014	MA3068/M/-X	ZENER DIODE	
D8018	MA3033-X	ZENER DIODE	

<b>TRANSISTOR</b>			
Q8001	2SA1037AK/QR/-X	SI TRANSISTOR	
Q8002	DTC124EKA-X	DIGI TRANSISTOR	
Q8003	DTA124EKA-X	DIGI TRANSISTOR	
Q8004	DTA124EKA-X	DIGI TRANSISTOR	
Q8006	DTC124EKA-X	DIGI TRANSISTOR	
Q8007	DTC124EKA-X	DIGI TRANSISTOR	

<b>IC</b>			
IC8001	GP1U281Q	IR DETECT UNIT	

<b>OTHERS</b>			
△	CEM002-001Z	FUSE CLIP	(x2)
	CM36626-B01-H	LED HOLDER	
	CM35921-005-H	CDS HOLDER	
CN8002	QGF1220C2-25	CONNECTOR	
△ F8901	QMF51E2-5R0S	FUSE	5.0A
J8001	QNS0155-001	3.5 JACK	
J8003	QMC004-C01	MINI DIN JACK	
J8004	CEM011-001	PIN JACK	
J8005	CEM011-002	PIN JACK	
J8006	CEM011-003	PIN JACK	
△ LC8002	NQR0169-001X	EMI FILTER	
△ LF8901	QQR1253-001	LINE FILTER	
S8001	QSW0619-003Z	TACT SWITCH	MENU
S8002	QSW0619-003Z	TACT SWITCH	CH DOWN
S8003	QSW0619-003Z	TACT SWITCH	CH UP
S8004	QSW0619-003Z	TACT SWITCH	VOL DOWN
S8005	QSW0619-003Z	TACT SWITCH	VOL UP
S8006	QSW0619-003Z	TACT SWITCH	TV/VIDEO
△ S8901	QSW0750-001	PUSH SWITCH	MAIN POWER
△ VA8901	QAF0052-621	VARISTOR	

## HV-29WZ / HV-29WZ/AU

# ■ MICOM P.W. BOARD ASS'Y (SMF-0M706A)

△ Symbol No.	Part No.	Part Name	Description
<b>RESISTOR</b>			
R0001	NRSΛ63J-102X	MG R	1kΩ 1/16W J
R0002	NRSΛ63J-104X	MG R	100kΩ 1/16W J
R0003	NRSΛ63J-102X	MG R	1kΩ 1/16W J
R0004	NRSΛ63J-102X	MG R	1kΩ 1/16W J
R0005	NRSΛ63J-102X	MG R	1kΩ 1/16W J
R0006	NRSΛ63J-393X	MG R	39kΩ 1/16W J
R0018	NRSΛ63J-102X	MG R	1kΩ 1/16W J
R0019	NRSΛ63J-102X	MG R	1kΩ 1/16W J
R0020	NRSΛ63J-102X	MG R	1kΩ 1/16W J
R0022	NRSΛ63J-472X	MG R	4.7kΩ 1/16W J
R0024	NRSΛ63J-472X	MG R	4.7kΩ 1/16W J
R0026	NRSΛ63J-472X	MG R	4.7kΩ 1/16W J
R0030	NRSΛ63J-472X	MG R	4.7kΩ 1/16W J
R0032	NRSΛ63J-472X	MG R	4.7kΩ 1/16W J
R0034	NRSΛ63J-OR0X	MG R	0.0Ω 1/16W J
R0035	NRSΛ63J-OR0X	MG R	0.0Ω 1/16W J
R0036	NRSΛ63J-OR0X	MG R	0.0Ω 1/16W J
R0037	NRSΛ63J-OR0X	MG R	0.0Ω 1/16W J
R0038	NRSΛ63J-OR0X	MG R	0.0Ω 1/16W J
R0039	NRSΛ63J-OR0X	MG R	0.0Ω 1/16W J
R0040	NRSΛ63J-OR0X	MG R	0.0Ω 1/16W J
R0041	NRSΛ63J-OR0X	MG R	0.0Ω 1/16W J
R0042	NRSΛ63J-OR0X	MG R	0.0Ω 1/16W J
R0043	NRSΛ63J-OR0X	MG R	0.0Ω 1/16W J
R0044	NRSΛ63J-OR0X	MG R	0.0Ω 1/16W J
R0045	NRSΛ63J-OR0X	MG R	0.0Ω 1/16W J
R0046	NRSΛ63J-OR0X	MG R	0.0Ω 1/16W J
R0047	NRSΛ63J-OR0X	MG R	0.0Ω 1/16W J
R0048	NRSΛ63J-OR0X	MG R	0.0Ω 1/16W J
R0049	NRSΛ63J-OR0X	MG R	0.0Ω 1/16W J
R0050	NRSΛ63J-OR0X	MG R	0.0Ω 1/16W J
R0051	NRSΛ63J-OR0X	MG R	0.0Ω 1/16W J
R0052	NRSΛ63J-OR0X	MG R	0.0Ω 1/16W J
R0053	NRSΛ63J-OR0X	MG R	0.0Ω 1/16W J
R0055	NRSΛ63J-OR0X	MG R	0.0Ω 1/16W J
R0057	NRSΛ63J-OR0X	MG R	0.0Ω 1/16W J
R0058	NRSΛ63J-OR0X	MG R	0.0Ω 1/16W J
R0059	NRSΛ63J-OR0X	MG R	0.0Ω 1/16W J
R0060	NRSΛ63J-OR0X	MG R	0.0Ω 1/16W J
R0061	NRSΛ63J-OR0X	MG R	0.0Ω 1/16W J
R0062	NRSΛ63J-OR0X	MG R	0.0Ω 1/16W J
R0063	NRSΛ63J-OR0X	MG R	0.0Ω 1/16W J
R0064	NRSΛ63J-OR0X	MG R	0.0Ω 1/16W J
R0065	NRSΛ63J-OR0X	MG R	0.0Ω 1/16W J
R0066	NRSΛ63J-OR0X	MG R	0.0Ω 1/16W J
R0067	NRSΛ63J-OR0X	MG R	0.0Ω 1/16W J
R0068	NRSΛ63J-OR0X	MG R	0.0Ω 1/16W J
R0069	NRSΛ63J-OR0X	MG R	0.0Ω 1/16W J
R0070	NRSΛ63J-OR0X	MG R	0.0Ω 1/16W J
R0071	NRSΛ63J-OR0X	MG R	0.0Ω 1/16W J
R0072	NRSΛ63J-OR0X	MG R	0.0Ω 1/16W J
R0073	NRSΛ63J-OR0X	MG R	0.0Ω 1/16W J
R0074	NRSΛ63J-OR0X	MG R	0.0Ω 1/16W J
R0075	NRSΛ63J-OR0X	MG R	0.0Ω 1/16W J
R0076	NRSΛ63J-OR0X	MG R	0.0Ω 1/16W J
R0077	NRSΛ63J-OR0X	MG R	0.0Ω 1/16W J
R0081	NCF31CZ-104X	C CAP.	0.1μF 16V Z
R0087	NRSΛ63J-221X	MG R	220Ω 1/16W J
R0089	NRSΛ63J-221X	MG R	220Ω 1/16W J
R0090	NRSΛ63J-221X	MG R	220Ω 1/16W J
R0091	NRSΛ63J-221X	MG R	220Ω 1/16W J
R0092	NRSΛ63J-472X	MG R	4.7kΩ 1/16W J
R0093	NRSΛ63J-221X	MG R	220Ω 1/16W J
R0094	NRSΛ63J-472X	MG R	4.7kΩ 1/16W J
R0095	NRSΛ63J-473X	MG R	47kΩ 1/16W J
R0096	NRSΛ63J-221X	MG R	220Ω 1/16W J
R0097	NRSΛ63J-102X	MG R	1kΩ 1/16W J
R0098	NRSΛ63J-OR0X	MG R	0.0Ω 1/16W J
R0107	NRSΛ63J-102X	MG R	1kΩ 1/16W J
R0108	NRSΛ63J-OR0X	MG R	0.0Ω 1/16W J
R0109	NRSΛ63J-OR0X	MG R	0.0Ω 1/16W J
R0110	NRSΛ63J-102X	MG R	1kΩ 1/16W J
R0111	NRSΛ63J-103X	MG R	10kΩ 1/16W J
R0112	NRSΛ63J-102X	MG R	1kΩ 1/16W J
R0113	NRSΛ63J-103X	MG R	10kΩ 1/16W J
R0114	NRSΛ63J-103X	MG R	10kΩ 1/16W J
R0119	NRSΛ63J-563X	MG R	56kΩ 1/16W J
R0120	NRSΛ63J-332X	MG R	3.3kΩ 1/16W J
R0121	NRSΛ63J-182X	MG R	1.8kΩ 1/16W J

△ Symbol No.	Part No.	Part Name	Description
<b>RESISTOR</b>			
R0122	NRS463J-103X	MG R	10kΩ 1/16W J
R0123	NRS463J-682X	MG R	6.8kΩ 1/16W J
R0124	NRS463J-101X	MG R	100Ω 1/16W J
R0125	NRS463J-472X	MG R	4.7kΩ 1/16W J
R0126	NRS463J-472X	MG R	4.7kΩ 1/16W J
R0127	NRS463J-472X	MG R	4.7kΩ 1/16W J
R0128	NRS463J-472X	MG R	4.7kΩ 1/16W J
R0129	NRS463J-823X	MG R	82kΩ 1/16W J
R0130	NRS463J-104X	MG R	100kΩ 1/16W J
R0131	NRS463J-823X	MG R	82kΩ 1/16W J
R0132	NRS463J-104X	MG R	100kΩ 1/16W J
R0133	NRS463J-0R0X	MG R	0.0Ω 1/16W J
R0135	NRS463J-102X	MG R	1kΩ 1/16W J
R0136	NRS463J-103X	MG R	10kΩ 1/16W J
R0137	NRS463J-222X	MG R	2.2kΩ 1/16W J
R0138	NRS463J-222X	MG R	2.2kΩ 1/16W J
R0139	NRS463J-222X	MG R	2.2kΩ 1/16W J
R0140	NRS463J-103X	MG R	10kΩ 1/16W J
R0144	NRS463J-103X	MG R	10kΩ 1/16W J
R0147	NRS463J-472X	MG R	4.7kΩ 1/16W J
R0148	NRS463J-472X	MG R	4.7kΩ 1/16W J
R0149	NRS463J-472X	MG R	4.7kΩ 1/16W J
R0151	NRS463J-183X	MG R	18kΩ 1/16W J
R0152	NRS463J-221X	MG R	220Ω 1/16W J
R0153	NRS463J-221X	MG R	220Ω 1/16W J
R0154	NRS463J-221X	MG R	220Ω 1/16W J
R0155	NRS463J-101X	MG R	100Ω 1/16W J
R0156	NRS463J-101X	MG R	100Ω 1/16W J
R0158	NRS463J-221X	MG R	220Ω 1/16W J
R0161	NRS463J-102X	MG R	1kΩ 1/16W J
R0162	NRS463J-153X	MG R	15kΩ 1/16W J
R0163	NRS463J-682X	MG R	6.8kΩ 1/16W J
R0165	NRS463J-103X	MG R	10kΩ 1/16W J
R0166	NRS463J-223X	MG R	22kΩ 1/16W J
R0167	NRS463J-103X	MG R	10kΩ 1/16W J
R0168	NRS463J-471X	MG R	470Ω 1/16W J

**CAPACITOR**

C0001	QETN0JM-477Z	E CAP.	470μF 6.3V M
C0002	NCF31CZ-104X	C CAP.	0.1μF 16V Z
C0003	NCB11CK-225X	C CAP.	2.2μF 16V K
C0004	QETN0JM-108Z	E CAP.	1000μF 6.3V M
C0005	NCB11CK-225X	C CAP.	2.2μF 16V K
C0006	NCB11CK-225X	C CAP.	2.2μF 16V K
C0007	NEH71CM-476X	E CAP.	47μF 16V M
C0008	NCB11CK-225X	C CAP.	2.2μF 16V K
C0012	NCF31CZ-104X	C CAP.	0.1μF 16V Z
C0013	NCF31CZ-104X	C CAP.	0.1μF 16V Z
C0014	NDC31HJ-821X	C CAP.	820pF 50V J
C0015	NDC31HJ-821X	C CAP.	820pF 50V J
C0017	NDC31HJ-101X	C CAP.	100pF 50V J
C0018	NDC31HJ-820X	C CAP.	82pF 50V J
C0019	NEH71CM-476X	E CAP.	47μF 16V M
C0020	NCF31CZ-104X	C CAP.	0.1μF 16V Z
C0021	NEH71CM-476X	E CAP.	47μF 16V M
C0023	NCB31EK-333X	C CAP.	0.033μF 25V K
C0024	NCF31CZ-104X	C CAP.	0.1μF 16V Z
C0025	NCB31EK-333X	C CAP.	0.033μF 25V K
C0026	NCF31CZ-104X	C CAP.	0.1μF 16V Z
C0027	NEH71CM-476X	E CAP.	47μF 16V M
C0028	NEH71CM-476X	E CAP.	47μF 16V M
C0029	NDC31HJ-151X	C CAP.	150pF 50V J
C0030	NCF31CZ-104X	C CAP.	0.1μF 16V Z
C0031	NCF31CZ-104X	C CAP.	0.1μF 16V Z
C0032	NCF31CZ-104X	C CAP.	0.1μF 16V Z
C0034	NCF31CZ-104X	C CAP.	0.1μF 16V Z
C0035	NCF31CZ-104X	C CAP.	0.1μF 16V Z
C0036	NCF31CZ-104X	C CAP.	0.1μF 16V Z
C0037	NCF31CZ-104X	C CAP.	0.1μF 16V Z
C0038	NCF31CZ-104X	C CAP.	0.1μF 16V Z
C0039	NCF31CZ-104X	C CAP.	0.1μF 16V Z
C0040	NDC31HJ-330X	C CAP.	33pF 50V J
C0041	NDC31HJ-270X	C CAP.	27pF 50V J
C0042	NCF31CZ-104X	C CAP.	0.1μF 16V Z
C0043	NCF31CZ-104X	C CAP.	0.1μF 16V Z
C0045	NCF31CZ-104X	C CAP.	0.1μF 16V Z
C0046	NCF31CZ-104X	C CAP.	0.1μF 16V Z
C0047	NCF31CZ-104X	C CAP.	0.1μF 16V Z

△ Symbol No.	Part No.	Part Name	Description
<b>CAPACITOR</b>			
C0048	NEH71CM-476X	E CAP.	47μF 16V M
C0049	NCF31CZ-104X	C CAP.	0.1μF 16V Z
C0050	NCF31CZ-104X	C CAP.	0.1μF 16V Z
C0051	NEH71CM-476X	E CAP.	47μF 16V M
C0052	NCF31CZ-104X	C CAP.	0.1μF 16V Z
C0053	NCF31CZ-104X	C CAP.	0.1μF 16V Z
C0054	NCF31CZ-104X	C CAP.	0.1μF 16V Z
C0055	NCF31CZ-104X	C CAP.	0.1μF 16V Z
C0056	NCF31CZ-104X	C CAP.	0.1μF 16V Z
C0057	NCF31CZ-104X	C CAP.	0.1μF 16V Z
C0059	NEH71CM-106X	E CAP.	10μF 16V M
C0060	NEH71CM-106X	E CAP.	10μF 16V M
C0061	NEH71CM-106X	E CAP.	10μF 16V M
C0062	NRS463J-0R0X	MG R	0.0Ω 1/16W J
C0063	NDC31HJ-820X	C CAP.	82pF 50V J
C0064	NDC31HJ-820X	C CAP.	82pF 50V J
C0065	NDC31HJ-820X	C CAP.	82pF 50V J
C0070	NEH71HM-225X	E CAP.	2.2μF 50V M

**COIL**

L0001	NQL092K-4R7X	INDUCTOR	4.7μH
L0003	NQL092K-4R7X	INDUCTOR	4.7μH
L0005	NQL092K-4R7X	INDUCTOR	4.7μH
L0006	NQL092K-4R7X	INDUCTOR	4.7μH
L0007	NQL092K-4R7X	INDUCTOR	4.7μH
L0008	NQL092K-4R7X	INDUCTOR	4.7μH
L0009	NQL034K-4R7X	INDUCTOR	4.7μH
L0010	NQL092K-4R7X	INDUCTOR	4.7μH
L0011	NQL092K-4R7X	INDUCTOR	4.7μH
L0012	NQL092K-4R7X	INDUCTOR	4.7μH
L0013	NQL092K-4R7X	INDUCTOR	4.7μH
L0014	NQL092K-4R7X	INDUCTOR	4.7μH
L0015	NQL034K-4R7X	INDUCTOR	4.7μH
L0016	NQL034K-4R7X	INDUCTOR	4.7μH
L0017	NQL092K-1R5X	INDUCTOR	1.5μH
L0018	NQL092K-1R5X	INDUCTOR	1.5μH
L0019	NQL092K-1R5X	INDUCTOR	1.5μH
L0020	NQL092K-1R5X	INDUCTOR	1.5μH
L0021	NQL092K-1R5X	INDUCTOR	1.5μH
L0022	NQL092K-1R5X	INDUCTOR	1.5μH

**DIODE**

D0001	MA111-X	SI DIODE
D0005	MA3056/M/-X	ZENER DIODE
D0006	MA3056/M/-X	ZENER DIODE
D0007	MA3056/M/-X	ZENER DIODE
D0008	MA3056/M/-X	ZENER DIODE
D0010	MA3058/M/-X	ZENER DIODE

**TRANSISTOR**

Q0001	2SC2712/YG/-X	SI TRANSISTOR
Q0002	2SC2712/YG/-X	SI TRANSISTOR
Q0007	2SA1162/YG/-X	SI TRANSISTOR
Q0021	2SC2712/YG/-X	SI TRANSISTOR
Q0022	2SC2712/YG/-X	SI TRANSISTOR

**IC**

IC0001	SDA6000	IC	(SERVICE)
IC0002	MR27V3202FJMMAX	IC	
IC0003	K45641632F-TC75	IC(DIGITAL)	
IC0004	AT24HC32-29WZ	IC	
IC0005	S-80828CNNB-W	IC	
IC0901	TA48M025F-X	IC	
IC0902	TA48M033F-X	IC	
IC0903	MM1437AF-X	IC	

**OTHERS**

CN0001	QGB1505K1-50	B TO B CONNE	
K0001	NRS463J-390X	MG R	39Ω 1/16W J
K0002	NQR0389-003X	FERRITE BEADS	
K0003	NRS463J-0R0X	MG R	0.0Ω 1/16W J
K0004	NQR0389-003X	FERRITE BEADS	
X0001	QAX0669-001Z	CRYSTAL	

## HV-29WZ/HK

## ■ MICOM P.W. BOARD ASS'Y (SMF-0M707)

Symbol No.	Part No.	Part Name	Description
------------	----------	-----------	-------------

## RESISTOR

R0001	NRSA63J-102X	MG R	1kΩ 1/16W J
R0002	NRSA63J-104X	MG R	100kΩ 1/16W J
R0003	NRSA63J-102X	MG R	1kΩ 1/16W J
R0004	NRSA63J-102X	MG R	1kΩ 1/16W J
R0005	NRSA63J-102X	MG R	1kΩ 1/16W J
R0006	NRSA63J-393X	MG R	39kΩ 1/16W J
R0018	NRSA63J-102X	MG R	1kΩ 1/16W J
R0019	NRSA63J-102X	MG R	1kΩ 1/16W J
R0020	NRSA63J-102X	MG R	1kΩ 1/16W J
R0022	NRSA63J-472X	MG R	4.7kΩ 1/16W J
R0024	NRSA63J-472X	MG R	4.7kΩ 1/16W J
R0026	NRSA63J-472X	MG R	4.7kΩ 1/16W J
R0030	NRSA63J-472X	MG R	4.7kΩ 1/16W J
R0032	NRSA63J-472X	MG R	4.7kΩ 1/16W J
R0034	NRSA63J-0R0X	MG R	0.0Ω 1/16W J
R0035	NRSA63J-0R0X	MG R	0.0Ω 1/16W J
R0036	NRSA63J-0R0X	MG R	0.0Ω 1/16W J
R0037	NRSA63J-0R0X	MG R	0.0Ω 1/16W J
R0038	NRSA63J-0R0X	MG R	0.0Ω 1/16W J
R0039	NRSA63J-0R0X	MG R	0.0Ω 1/16W J
R0040	NRSA63J-0R0X	MG R	0.0Ω 1/16W J
R0041	NRSA63J-0R0X	MG R	0.0Ω 1/16W J
R0042	NRSA63J-0R0X	MG R	0.0Ω 1/16W J
R0043	NRSA63J-0R0X	MG R	0.0Ω 1/16W J
R0044	NRSA63J-0R0X	MG R	0.0Ω 1/16W J
R0045	NRSA63J-0R0X	MG R	0.0Ω 1/16W J
R0046	NRSA63J-0R0X	MG R	0.0Ω 1/16W J
R0047	NRSA63J-0R0X	MG R	0.0Ω 1/16W J
R0048	NRSA63J-0R0X	MG R	0.0Ω 1/16W J
R0049	NRSA63J-0R0X	MG R	0.0Ω 1/16W J
R0050	NRSA63J-0R0X	MG R	0.0Ω 1/16W J
R0051	NRSA63J-0R0X	MG R	0.0Ω 1/16W J
R0052	NRSA63J-0R0X	MG R	0.0Ω 1/16W J
R0053	NRSA63J-0R0X	MG R	0.0Ω 1/16W J
R0055	NRSA63J-0R0X	MG R	0.0Ω 1/16W J
R0057	NRSA63J-0R0X	MG R	0.0Ω 1/16W J
R0058	NRSA63J-0R0X	MG R	0.0Ω 1/16W J
R0059	NRSA63J-0R0X	MG R	0.0Ω 1/16W J
R0060	NRSA63J-0R0X	MG R	0.0Ω 1/16W J
R0061	NRSA63J-0R0X	MG R	0.0Ω 1/16W J
R0062	NRSA63J-0R0X	MG R	0.0Ω 1/16W J
R0063	NRSA63J-0R0X	MG R	0.0Ω 1/16W J
R0064	NRSA63J-0R0X	MG R	0.0Ω 1/16W J
R0065	NRSA63J-0R0X	MG R	0.0Ω 1/16W J
R0066	NRSA63J-0R0X	MG R	0.0Ω 1/16W J
R0067	NRSA63J-0R0X	MG R	0.0Ω 1/16W J
R0068	NRSA63J-0R0X	MG R	0.0Ω 1/16W J
R0069	NRSA63J-0R0X	MG R	0.0Ω 1/16W J
R0070	NRSA63J-0R0X	MG R	0.0Ω 1/16W J
R0071	NRSA63J-0R0X	MG R	0.0Ω 1/16W J
R0072	NRSA63J-0R0X	MG R	0.0Ω 1/16W J
R0073	NRSA63J-0R0X	MG R	0.0Ω 1/16W J
R0074	NRSA63J-0R0X	MG R	0.0Ω 1/16W J
R0075	NRSA63J-0R0X	MG R	0.0Ω 1/16W J
R0076	NRSA63J-0R0X	MG R	0.0Ω 1/16W J
R0077	NRSA63J-0R0X	MG R	0.0Ω 1/16W J
R0081	NCF31CZ-104X	C CAP.	0.1μF 16V Z
R0087	NRSA63J-221X	MG R	220Ω 1/16W J
R0089	NRSA63J-221X	MG R	220Ω 1/16W J
R0090	NRSA63J-221X	MG R	220Ω 1/16W J
R0091	NRSA63J-221X	MG R	220Ω 1/16W J
R0092	NRSA63J-472X	MG R	4.7kΩ 1/16W J
R0093	NRSA63J-221X	MG R	220Ω 1/16W J
R0094	NRSA63J-472X	MG R	4.7kΩ 1/16W J
R0095	NRSA63J-473X	MG R	47kΩ 1/16W J
R0096	NRSA63J-221X	MG R	220Ω 1/16W J
R0097	NRSA63J-102X	MG R	1kΩ 1/16W J
R0098	NRSA63J-0R0X	MG R	0.0Ω 1/16W J
R0107	NRSA63J-102X	MG R	1kΩ 1/16W J
R0108	NRSA63J-0R0X	MG R	0.0Ω 1/16W J
R0109	NRSA63J-0R0X	MG R	0.0Ω 1/16W J
R0110	NRSA63J-102X	MG R	1kΩ 1/16W J
R0111	NRSA63J-103X	MG R	10kΩ 1/16W J
R0112	NRSA63J-102X	MG R	1kΩ 1/16W J
R0113	NRSA63J-103X	MG R	10kΩ 1/16W J
R0114	NRSA63J-103X	MG R	10kΩ 1/16W J

Symbol No.	Part No.	Part Name	Description
------------	----------	-----------	-------------

## RESISTOR

R0119	NRSA63J-563X	MG R	56kΩ 1/16W J
R0120	NRSA63J-332X	MG R	3.3kΩ 1/16W J
R0121	NRSA63J-182X	MG R	1.8kΩ 1/16W J
R0122	NRSA63J-103X	MG R	10kΩ 1/16W J
R0123	NRSA63J-682X	MG R	6.8kΩ 1/16W J
R0124	NRSA63J-101X	MG R	100Ω 1/16W J
R0125	NRSA63J-472X	MG R	4.7kΩ 1/16W J
R0126	NRSA63J-472X	MG R	4.7kΩ 1/16W J
R0127	NRSA63J-472X	MG R	4.7kΩ 1/16W J
R0128	NRSA63J-472X	MG R	4.7kΩ 1/16W J
R0129	NRSA63J-823X	MG R	82kΩ 1/16W J
R0130	NRSA63J-104X	MG R	100kΩ 1/16W J
R0131	NRSA63J-823X	MG R	82kΩ 1/16W J
R0132	NRSA63J-104X	MG R	100kΩ 1/16W J
R0133	NRSA63J-0R0X	MG R	0.0Ω 1/16W J
R0135	NRSA63J-102X	MG R	1kΩ 1/16W J
R0136	NRSA63J-103X	MG R	10kΩ 1/16W J
R0137	NRSA63J-222X	MG R	2.2kΩ 1/16W J
R0138	NRSA63J-222X	MG R	2.2kΩ 1/16W J
R0139	NRSA63J-222X	MG R	2.2kΩ 1/16W J
R0140	NRSA63J-103X	MG R	10kΩ 1/16W J
R0144	NRSA63J-103X	MG R	10kΩ 1/16W J
R0147	NRSA63J-472X	MG R	4.7kΩ 1/16W J
R0148	NRSA63J-472X	MG R	4.7kΩ 1/16W J
R0149	NRSA63J-472X	MG R	4.7kΩ 1/16W J
R0151	NRSA63J-183X	MG R	18kΩ 1/16W J
R0152	NRSA63J-221X	MG R	220Ω 1/16W J
R0153	NRSA63J-221X	MG R	220Ω 1/16W J
R0154	NRSA63J-221X	MG R	220Ω 1/16W J
R0155	NRSA63J-101X	MG R	100Ω 1/16W J
R0156	NRSA63J-101X	MG R	100Ω 1/16W J
R0158	NRSA63J-221X	MG R	220Ω 1/16W J
R0161	NRSA63J-102X	MG R	1kΩ 1/16W J
R0162	NRSA63J-153X	MG R	15kΩ 1/16W J
R0163	NRSA63J-682X	MG R	6.8kΩ 1/16W J
R0165	NRSA63J-103X	MG R	10kΩ 1/16W J
R0166	NRSA63J-223X	MG R	22kΩ 1/16W J
R0167	NRSA63J-103X	MG R	10kΩ 1/16W J
R0168	NRSA63J-471X	MG R	470Ω 1/16W J

## CAPACITOR

C0001	QETNOJM-477Z	E CAP.	470μF 6.3V M
C0002	NCF31CZ-104X	C CAP.	0.1μF 16V Z
C0003	NCB11CK-225X	C CAP.	2.2μF 16V K
C0004	QETNOJM-108Z	E CAP.	1000μF 6.3V M
C0005	NCB11CK-225X	C CAP.	2.2μF 16V K
C0006	NCB11CK-225X	C CAP.	2.2μF 16V K
C0007	NEH71CM-476X	E CAP.	47μF 16V M
C0008	NCB11CK-225X	C CAP.	2.2μF 16V K
C0012	NCF31CZ-104X	C CAP.	0.1μF 16V Z
C0013	NCF31CZ-104X	C CAP.	0.1μF 16V Z
C0014	NDC31HJ-821X	C CAP.	820pF 50V J
C0015	NDC31HJ-821X	C CAP.	820pF 50V J
C0017	NDC31HJ-101X	C CAP.	100pF 50V J
C0018	NDC31HJ-820X	C CAP.	82pF 50V J
C0019	NEH71CM-476X	E CAP.	47μF 16V M
C0020	NCF31CZ-104X	C CAP.	0.1μF 16V Z
C0021	NEH71CM-476X	E CAP.	47μF 16V M
C0023	NCB31EK-333X	C CAP.	0.033μF 25V K
C0024	NCF31CZ-104X	C CAP.	0.1μF 16V Z
C0025	NCB31EK-333X	C CAP.	0.033μF 25V K
C0026	NCF31CZ-104X	C CAP.	0.1μF 16V Z
C0027	NEH71CM-476X	E CAP.	47μF 16V M
C0028	NEH71CM-476X	E CAP.	47μF 16V M
C0029	NDC31HJ-151X	C CAP.	150pF 50V J
C0030	NCF31CZ-104X	C CAP.	0.1μF 16V Z
C0031	NCF31CZ-104X	C CAP.	0.1μF 16V Z
C0032	NCF31CZ-104X	C CAP.	0.1μF 16V Z
C0034	NCF31CZ-104X	C CAP.	0.1μF 16V Z
C0035	NCF31CZ-104X	C CAP.	0.1μF 16V Z
C0036	NCF31CZ-104X	C CAP.	0.1μF 16V Z
C0037	NCF31CZ-104X	C CAP.	0.1μF 16V Z
C0038	NCF31CZ-104X	C CAP.	0.1μF 16V Z
C0039	NCF31CZ-104X	C CAP.	0.1μF 16V Z
C0040	NDC31HJ-330X	C CAP.	33pF 50V J

△ Symbol No.	Part No.	Part Name	Description
<b>CAPACITOR</b>			
C0041	NDC31HJ-270X	C CAP.	27pF 50V J
C0042	NCF31CZ-104X	C CAP.	0.1μF 16V Z
C0043	NCF31CZ-104X	C CAP.	0.1μF 16V Z
C0045	NCF31CZ-104X	C CAP.	0.1μF 16V Z
C0046	NCF31CZ-104X	C CAP.	0.1μF 16V Z
C0047	NCF31CZ-104X	C CAP.	0.1μF 16V Z
C0048	NEH71CM-476X	E CAP.	47μF 16V M
C0049	NCF31CZ-104X	C CAP.	0.1μF 16V Z
C0050	NCF31CZ-104X	C CAP.	0.1μF 16V Z
C0051	NEH71CM-476X	E CAP.	47μF 16V M
C0052	NCF31CZ-104X	C CAP.	0.1μF 16V Z
C0053	NCF31CZ-104X	C CAP.	0.1μF 16V Z
C0054	NCF31CZ-104X	C CAP.	0.1μF 16V Z
C0055	NCF31CZ-104X	C CAP.	0.1μF 16V Z
C0056	NCF31CZ-104X	C CAP.	0.1μF 16V Z
C0057	NCF31CZ-104X	C CAP.	0.1μF 16V Z
C0059	NEH71CM-106X	E CAP.	10μF 16V M
C0060	NEH71CM-106X	E CAP.	10μF 16V M
C0061	NEH71CM-106X	E CAP.	10μF 16V M
C0062	NRS463J-0R0X	MG R	0.0Ω 1/16W J
C0063	NDC31HJ-820X	C CAP.	82pF 50V J
C0064	NDC31HJ-820X	C CAP.	82pF 50V J
C0065	NDC31HJ-820X	C CAP.	82pF 50V J
C0070	NEH71HM-225X	E CAP.	2.2μF 50V M

**COIL**

L0001	NQL092K-4R7X	INDUCTOR	4.7μH
L0003	NQL092K-4R7X	INDUCTOR	4.7μH
L0005	NQL092K-4R7X	INDUCTOR	4.7μH
L0006	NQL092K-4R7X	INDUCTOR	4.7μH
L0007	NQL092K-4R7X	INDUCTOR	4.7μH
L0008	NQL092K-4R7X	INDUCTOR	4.7μH
L0009	NQL034K-4R7X	INDUCTOR	4.7μH
L0010	NQL092K-4R7X	INDUCTOR	4.7μH
L0011	NQL092K-4R7X	INDUCTOR	4.7μH
L0012	NQL092K-4R7X	INDUCTOR	4.7μH
L0013	NQL092K-4R7X	INDUCTOR	4.7μH
L0014	NQL092K-4R7X	INDUCTOR	4.7μH
L0015	NQL034K-4R7X	INDUCTOR	4.7μH
L0016	NQL034K-4R7X	INDUCTOR	4.7μH
L0017	NQL092K-1R5X	INDUCTOR	1.5μH
L0018	NQL092K-1R5X	INDUCTOR	1.5μH
L0019	NQL092K-1R5X	INDUCTOR	1.5μH
L0020	NQL092K-1R5X	INDUCTOR	1.5μH
L0021	NQL092K-1R5X	INDUCTOR	1.5μH
L0022	NQL092K-1R5X	INDUCTOR	1.5μH

**DIODE**

D0001	MA111-X	SI DIODE
D0005	MA3056/M/-X	ZENER DIODE
D0006	MA3056/M/-X	ZENER DIODE
D0007	MA3056/M/-X	ZENER DIODE
D0008	MA3056/M/-X	ZENER DIODE
D0010	MA3058/M/-X	ZENER DIODE

**TRANSISTOR**

Q0001	2SC2712/YG/-X	SI TRANSISTOR
Q0002	2SC2712/YG/-X	SI TRANSISTOR
Q0007	2SA1162/YG/-X	SI TRANSISTOR
Q0021	2SC2712/YG/-X	SI TRANSISTOR
Q0022	2SC2712/YG/-X	SI TRANSISTOR

**IC**

IC0001	SDA6000	IC	(SERVICE)
IC0002	MR27V3202FJMMAX	IC	
IC0003	K45641632F-TCT5	IC (DIGITAL)	
IC0004	AT24WC32-29WZ	IC	
IC0005	S-80828CNCB-W	IC	
IC0901	TA48M025F-X	IC	
IC0902	TA48M033F-X	IC	
IC0903	MM1437AF-X	IC	

△ Symbol No.	Part No.	Part Name	Description
<b>OTHERS</b>			
CN0001	QGB1505K1-50	B TO B CONNE	
K0001	NRS463J-390X	MG R	39Ω 1/16W J
K0002	NQR0889-003X	FERRITE BEADS	
K0003	NRS463J-0R0X	MG R	0.0Ω 1/16W J
K0004	NQR0889-003X	FERRITE BEADS	
X0001	QAX0669-001Z	CRYSTAL	

## HV-29WZ-A

## ■ MICOM P.W. BOARD ASS'Y (SMF-0M708A)

Symbol No.	Part No.	Part Name	Description
------------	----------	-----------	-------------

## RESISTOR

R0001	NRSA63J-102X	MG R	1kΩ 1/16W J
R0002	NRSA63J-104X	MG R	100kΩ 1/16W J
R0003	NRSA63J-102X	MG R	1kΩ 1/16W J
R0004	NRSA63J-102X	MG R	1kΩ 1/16W J
R0005	NRSA63J-102X	MG R	1kΩ 1/16W J
R0006	NRSA63J-393X	MG R	39kΩ 1/16W J
R0018	NRSA63J-102X	MG R	1kΩ 1/16W J
R0019	NRSA63J-102X	MG R	1kΩ 1/16W J
R0020	NRSA63J-102X	MG R	1kΩ 1/16W J
R0022	NRSA63J-472X	MG R	4.7kΩ 1/16W J
R0024	NRSA63J-472X	MG R	4.7kΩ 1/16W J
R0026	NRSA63J-472X	MG R	4.7kΩ 1/16W J
R0030	NRSA63J-472X	MG R	4.7kΩ 1/16W J
R0032	NRSA63J-472X	MG R	4.7kΩ 1/16W J
R0034	NRSA63J-0R0X	MG R	0.0Ω 1/16W J
R0035	NRSA63J-0R0X	MG R	0.0Ω 1/16W J
R0036	NRSA63J-0R0X	MG R	0.0Ω 1/16W J
R0037	NRSA63J-0R0X	MG R	0.0Ω 1/16W J
R0038	NRSA63J-0R0X	MG R	0.0Ω 1/16W J
R0039	NRSA63J-0R0X	MG R	0.0Ω 1/16W J
R0040	NRSA63J-0R0X	MG R	0.0Ω 1/16W J
R0041	NRSA63J-0R0X	MG R	0.0Ω 1/16W J
R0042	NRSA63J-0R0X	MG R	0.0Ω 1/16W J
R0043	NRSA63J-0R0X	MG R	0.0Ω 1/16W J
R0044	NRSA63J-0R0X	MG R	0.0Ω 1/16W J
R0045	NRSA63J-0R0X	MG R	0.0Ω 1/16W J
R0046	NRSA63J-0R0X	MG R	0.0Ω 1/16W J
R0047	NRSA63J-0R0X	MG R	0.0Ω 1/16W J
R0048	NRSA63J-0R0X	MG R	0.0Ω 1/16W J
R0049	NRSA63J-0R0X	MG R	0.0Ω 1/16W J
R0050	NRSA63J-0R0X	MG R	0.0Ω 1/16W J
R0051	NRSA63J-0R0X	MG R	0.0Ω 1/16W J
R0052	NRSA63J-0R0X	MG R	0.0Ω 1/16W J
R0053	NRSA63J-0R0X	MG R	0.0Ω 1/16W J
R0055	NRSA63J-0R0X	MG R	0.0Ω 1/16W J
R0057	NRSA63J-0R0X	MG R	0.0Ω 1/16W J
R0058	NRSA63J-0R0X	MG R	0.0Ω 1/16W J
R0059	NRSA63J-0R0X	MG R	0.0Ω 1/16W J
R0060	NRSA63J-0R0X	MG R	0.0Ω 1/16W J
R0061	NRSA63J-0R0X	MG R	0.0Ω 1/16W J
R0062	NRSA63J-0R0X	MG R	0.0Ω 1/16W J
R0063	NRSA63J-0R0X	MG R	0.0Ω 1/16W J
R0064	NRSA63J-0R0X	MG R	0.0Ω 1/16W J
R0065	NRSA63J-0R0X	MG R	0.0Ω 1/16W J
R0066	NRSA63J-0R0X	MG R	0.0Ω 1/16W J
R0067	NRSA63J-0R0X	MG R	0.0Ω 1/16W J
R0068	NRSA63J-0R0X	MG R	0.0Ω 1/16W J
R0069	NRSA63J-0R0X	MG R	0.0Ω 1/16W J
R0070	NRSA63J-0R0X	MG R	0.0Ω 1/16W J
R0071	NRSA63J-0R0X	MG R	0.0Ω 1/16W J
R0072	NRSA63J-0R0X	MG R	0.0Ω 1/16W J
R0073	NRSA63J-0R0X	MG R	0.0Ω 1/16W J
R0074	NRSA63J-0R0X	MG R	0.0Ω 1/16W J
R0075	NRSA63J-0R0X	MG R	0.0Ω 1/16W J
R0076	NRSA63J-0R0X	MG R	0.0Ω 1/16W J
R0077	NRSA63J-0R0X	MG R	0.0Ω 1/16W J
R0081	NCF31CZ-104X	C CAP.	0.1μF 16V Z
R0087	NRSA63J-221X	MG R	220Ω 1/16W J
R0089	NRSA63J-221X	MG R	220Ω 1/16W J
R0090	NRSA63J-221X	MG R	220Ω 1/16W J
R0091	NRSA63J-221X	MG R	220Ω 1/16W J
R0092	NRSA63J-472X	MG R	4.7kΩ 1/16W J
R0093	NRSA63J-221X	MG R	220Ω 1/16W J
R0094	NRSA63J-472X	MG R	4.7kΩ 1/16W J
R0095	NRSA63J-473X	MG R	47kΩ 1/16W J
R0096	NRSA63J-221X	MG R	220Ω 1/16W J
R0097	NRSA63J-102X	MG R	1kΩ 1/16W J
R0098	NRSA63J-0R0X	MG R	0.0Ω 1/16W J
R0107	NRSA63J-102X	MG R	1kΩ 1/16W J
R0108	NRSA63J-0R0X	MG R	0.0Ω 1/16W J
R0109	NRSA63J-0R0X	MG R	0.0Ω 1/16W J
R0110	NRSA63J-102X	MG R	1kΩ 1/16W J
R0111	NRSA63J-103X	MG R	10kΩ 1/16W J
R0112	NRSA63J-102X	MG R	1kΩ 1/16W J
R0113	NRSA63J-103X	MG R	10kΩ 1/16W J
R0114	NRSA63J-103X	MG R	10kΩ 1/16W J

Symbol No.	Part No.	Part Name	Description
------------	----------	-----------	-------------

## RESISTOR

R0119	NRSA63J-563X	MG R	56kΩ 1/16W J
R0120	NRSA63J-332X	MG R	3.3kΩ 1/16W J
R0121	NRSA63J-182X	MG R	1.8kΩ 1/16W J
R0122	NRSA63J-103X	MG R	10kΩ 1/16W J
R0123	NRSA63J-682X	MG R	6.8kΩ 1/16W J
R0124	NRSA63J-101X	MG R	100Ω 1/16W J
R0125	NRSA63J-472X	MG R	4.7kΩ 1/16W J
R0126	NRSA63J-472X	MG R	4.7kΩ 1/16W J
R0127	NRSA63J-472X	MG R	4.7kΩ 1/16W J
R0128	NRSA63J-472X	MG R	4.7kΩ 1/16W J
R0129	NRSA63J-823X	MG R	82kΩ 1/16W J
R0130	NRSA63J-104X	MG R	100kΩ 1/16W J
R0131	NRSA63J-823X	MG R	82kΩ 1/16W J
R0132	NRSA63J-104X	MG R	100kΩ 1/16W J
R0133	NRSA63J-0R0X	MG R	0.0Ω 1/16W J
R0135	NRSA63J-102X	MG R	1kΩ 1/16W J
R0136	NRSA63J-103X	MG R	10kΩ 1/16W J
R0137	NRSA63J-222X	MG R	2.2kΩ 1/16W J
R0138	NRSA63J-222X	MG R	2.2kΩ 1/16W J
R0139	NRSA63J-222X	MG R	2.2kΩ 1/16W J
R0140	NRSA63J-103X	MG R	10kΩ 1/16W J
R0144	NRSA63J-103X	MG R	10kΩ 1/16W J
R0147	NRSA63J-472X	MG R	4.7kΩ 1/16W J
R0148	NRSA63J-472X	MG R	4.7kΩ 1/16W J
R0149	NRSA63J-472X	MG R	4.7kΩ 1/16W J
R0151	NRSA63J-183X	MG R	18kΩ 1/16W J
R0152	NRSA63J-221X	MG R	220Ω 1/16W J
R0153	NRSA63J-221X	MG R	220Ω 1/16W J
R0154	NRSA63J-221X	MG R	220Ω 1/16W J
R0155	NRSA63J-101X	MG R	100Ω 1/16W J
R0156	NRSA63J-101X	MG R	100Ω 1/16W J
R0158	NRSA63J-221X	MG R	220Ω 1/16W J
R0161	NRSA63J-102X	MG R	1kΩ 1/16W J
R0162	NRSA63J-153X	MG R	15kΩ 1/16W J
R0163	NRSA63J-682X	MG R	6.8kΩ 1/16W J
R0165	NRSA63J-103X	MG R	10kΩ 1/16W J
R0166	NRSA63J-223X	MG R	22kΩ 1/16W J
R0167	NRSA63J-103X	MG R	10kΩ 1/16W J
R0168	NRSA63J-471X	MG R	470Ω 1/16W J

## CAPACITOR

C0001	QETNOJM-477Z	E CAP.	470μF 6.3V M
C0002	NCF31CZ-104X	C CAP.	0.1μF 16V Z
C0003	NCB11CK-225X	C CAP.	2.2μF 16V K
C0004	QETNOJM-108Z	E CAP.	1000μF 6.3V M
C0005	NCB11CK-225X	C CAP.	2.2μF 16V K
C0006	NCB11CK-225X	C CAP.	2.2μF 16V K
C0007	NEH71CM-476X	E CAP.	47μF 16V M
C0008	NCB11CK-225X	C CAP.	2.2μF 16V K
C0012	NCF31CZ-104X	C CAP.	0.1μF 16V Z
C0013	NCF31CZ-104X	C CAP.	0.1μF 16V Z
C0014	NDC31HJ-821X	C CAP.	820pF 50V J
C0015	NDC31HJ-821X	C CAP.	820pF 50V J
C0017	NDC31HJ-101X	C CAP.	100pF 50V J
C0018	NDC31HJ-820X	C CAP.	82pF 50V J
C0019	NEH71CM-476X	E CAP.	47μF 16V M
C0020	NCF31CZ-104X	C CAP.	0.1μF 16V Z
C0021	NEH71CM-476X	E CAP.	47μF 16V M
C0023	NCB31EK-333X	C CAP.	0.033μF 25V K
C0024	NCF31CZ-104X	C CAP.	0.1μF 16V Z
C0025	NCB31EK-333X	C CAP.	0.033μF 25V K
C0026	NCF31CZ-104X	C CAP.	0.1μF 16V Z
C0027	NEH71CM-476X	E CAP.	47μF 16V M
C0028	NEH71CM-476X	E CAP.	47μF 16V M
C0029	NDC31HJ-151X	C CAP.	150pF 50V J
C0030	NCF31CZ-104X	C CAP.	0.1μF 16V Z
C0031	NCF31CZ-104X	C CAP.	0.1μF 16V Z
C0032	NCF31CZ-104X	C CAP.	0.1μF 16V Z
C0034	NCF31CZ-104X	C CAP.	0.1μF 16V Z
C0035	NCF31CZ-104X	C CAP.	0.1μF 16V Z
C0036	NCF31CZ-104X	C CAP.	0.1μF 16V Z
C0037	NCF31CZ-104X	C CAP.	0.1μF 16V Z
C0038	NCF31CZ-104X	C CAP.	0.1μF 16V Z
C0039	NCF31CZ-104X	C CAP.	0.1μF 16V Z
C0040	NDC31HJ-330X	C CAP.	33pF 50V J



△ Symbol No.	Part No.	Part Name	Description
<b>CAPACITOR</b>			
C0041	NDC31HJ-270X	C CAP.	27pF 50V J
C0042	NCF31CZ-104X	C CAP.	0.1μF 16V Z
C0043	NCF31CZ-104X	C CAP.	0.1μF 16V Z
C0045	NCF31CZ-104X	C CAP.	0.1μF 16V Z
C0046	NCF31CZ-104X	C CAP.	0.1μF 16V Z
C0047	NCF31CZ-104X	C CAP.	0.1μF 16V Z
C0048	NEH71CM-476X	E CAP.	47μF 16V M
C0049	NCF31CZ-104X	C CAP.	0.1μF 16V Z
C0050	NCF31CZ-104X	C CAP.	0.1μF 16V Z
C0051	NEH71CM-476X	E CAP.	47μF 16V M
C0052	NCF31CZ-104X	C CAP.	0.1μF 16V Z
C0053	NCF31CZ-104X	C CAP.	0.1μF 16V Z
C0054	NCF31CZ-104X	C CAP.	0.1μF 16V Z
C0055	NCF31CZ-104X	C CAP.	0.1μF 16V Z
C0056	NCF31CZ-104X	C CAP.	0.1μF 16V Z
C0057	NCF31CZ-104X	C CAP.	0.1μF 16V Z
C0059	NEH71CM-106X	E CAP.	10μF 16V M
C0060	NEH71CM-106X	E CAP.	10μF 16V M
C0061	NEH71CM-106X	E CAP.	10μF 16V M
C0062	NRS463J-0R0X	MG R	0.0Ω 1/16W J
C0063	NDC31HJ-820X	C CAP.	82pF 50V J
C0064	NDC31HJ-820X	C CAP.	82pF 50V J
C0065	NDC31HJ-820X	C CAP.	82pF 50V J
C0070	NEH71HM-225X	E CAP.	2.2μF 50V M

**COIL**

L0001	NQL092K-4R7X	INDUCTOR	4.7μH
L0003	NQL092K-4R7X	INDUCTOR	4.7μH
L0005	NQL092K-4R7X	INDUCTOR	4.7μH
L0006	NQL092K-4R7X	INDUCTOR	4.7μH
L0007	NQL092K-4R7X	INDUCTOR	4.7μH
L0008	NQL092K-4R7X	INDUCTOR	4.7μH
L0009	NQL034K-4R7X	INDUCTOR	4.7μH
L0010	NQL092K-4R7X	INDUCTOR	4.7μH
L0011	NQL092K-4R7X	INDUCTOR	4.7μH
L0012	NQL092K-4R7X	INDUCTOR	4.7μH
L0013	NQL092K-4R7X	INDUCTOR	4.7μH
L0014	NQL092K-4R7X	INDUCTOR	4.7μH
L0015	NQL034K-4R7X	INDUCTOR	4.7μH
L0016	NQL034K-4R7X	INDUCTOR	4.7μH
L0017	NQL092K-1R5X	INDUCTOR	1.5μH
L0018	NQL092K-1R5X	INDUCTOR	1.5μH
L0019	NQL092K-1R5X	INDUCTOR	1.5μH
L0020	NQL092K-1R5X	INDUCTOR	1.5μH
L0021	NQL092K-1R5X	INDUCTOR	1.5μH
L0022	NQL092K-1R5X	INDUCTOR	1.5μH

**DIODE**

D0001	MA111-X	SI DIODE
D0005	MA3056/M/-X	ZENER DIODE
D0006	MA3056/M/-X	ZENER DIODE
D0007	MA3056/M/-X	ZENER DIODE
D0008	MA3056/M/-X	ZENER DIODE
D0010	MA3058/M/-X	ZENER DIODE

**TRANSISTOR**

Q0001	2SC2712/YG/-X	SI TRANSISTOR
Q0002	2SC2712/YG/-X	SI TRANSISTOR
Q0007	2SA1162/YG/-X	SI TRANSISTOR
Q0021	2SC2712/YG/-X	SI TRANSISTOR
Q0022	2SC2712/YG/-X	SI TRANSISTOR

**IC**

IC0001	SDA6000	IC	(SERVICE)
IC0002	MR27V3202FJMMAX	IC	
IC0003	K45641632F-TCT5	IC (DIGITAL)	
IC0004	AT24WC32-29WZ	IC	
IC0005	S-80828CNCB-W	IC	
IC0901	TA48M025F-X	IC	
IC0902	TA48M033F-X	IC	
IC0903	MM1437AF-X	IC	

△ Symbol No.	Part No.	Part Name	Description
<b>OTHERS</b>			
CN0001	QGB1505K1-50	B TO B CONNE	
K0001	NRS463J-390X	MG R	39Ω 1/16W J
K0002	NQR0889-003X	FERRITE BEADS	
K0003	NRS463J-0R0X	MG R	0.0Ω 1/16W J
K0004	NQR0889-003X	FERRITE BEADS	
X0001	QAX0669-001Z	CRYSTAL	

## HV-29WZ/EE

## ■ MICOM P.W. BOARD ASS'Y (SMF-0M709A)

Symbol No.	Part No.	Part Name	Description
------------	----------	-----------	-------------

## RESISTOR

R0001	NRSA63J-102X	MG R	1kΩ 1/16W J
R0002	NRSA63J-104X	MG R	100kΩ 1/16W J
R0003	NRSA63J-102X	MG R	1kΩ 1/16W J
R0004	NRSA63J-102X	MG R	1kΩ 1/16W J
R0005	NRSA63J-102X	MG R	1kΩ 1/16W J
R0006	NRSA63J-393X	MG R	39kΩ 1/16W J
R0018	NRSA63J-102X	MG R	1kΩ 1/16W J
R0019	NRSA63J-102X	MG R	1kΩ 1/16W J
R0020	NRSA63J-102X	MG R	1kΩ 1/16W J
R0022	NRSA63J-472X	MG R	4.7kΩ 1/16W J
R0024	NRSA63J-472X	MG R	4.7kΩ 1/16W J
R0026	NRSA63J-472X	MG R	4.7kΩ 1/16W J
R0030	NRSA63J-472X	MG R	4.7kΩ 1/16W J
R0032	NRSA63J-472X	MG R	4.7kΩ 1/16W J
R0034	NRSA63J-0R0X	MG R	0.0Ω 1/16W J
R0035	NRSA63J-0R0X	MG R	0.0Ω 1/16W J
R0036	NRSA63J-0R0X	MG R	0.0Ω 1/16W J
R0037	NRSA63J-0R0X	MG R	0.0Ω 1/16W J
R0038	NRSA63J-0R0X	MG R	0.0Ω 1/16W J
R0039	NRSA63J-0R0X	MG R	0.0Ω 1/16W J
R0040	NRSA63J-0R0X	MG R	0.0Ω 1/16W J
R0041	NRSA63J-0R0X	MG R	0.0Ω 1/16W J
R0042	NRSA63J-0R0X	MG R	0.0Ω 1/16W J
R0043	NRSA63J-0R0X	MG R	0.0Ω 1/16W J
R0044	NRSA63J-0R0X	MG R	0.0Ω 1/16W J
R0045	NRSA63J-0R0X	MG R	0.0Ω 1/16W J
R0046	NRSA63J-0R0X	MG R	0.0Ω 1/16W J
R0047	NRSA63J-0R0X	MG R	0.0Ω 1/16W J
R0048	NRSA63J-0R0X	MG R	0.0Ω 1/16W J
R0049	NRSA63J-0R0X	MG R	0.0Ω 1/16W J
R0050	NRSA63J-0R0X	MG R	0.0Ω 1/16W J
R0051	NRSA63J-0R0X	MG R	0.0Ω 1/16W J
R0052	NRSA63J-0R0X	MG R	0.0Ω 1/16W J
R0053	NRSA63J-0R0X	MG R	0.0Ω 1/16W J
R0055	NRSA63J-0R0X	MG R	0.0Ω 1/16W J
R0057	NRSA63J-0R0X	MG R	0.0Ω 1/16W J
R0058	NRSA63J-0R0X	MG R	0.0Ω 1/16W J
R0059	NRSA63J-0R0X	MG R	0.0Ω 1/16W J
R0060	NRSA63J-0R0X	MG R	0.0Ω 1/16W J
R0061	NRSA63J-0R0X	MG R	0.0Ω 1/16W J
R0062	NRSA63J-0R0X	MG R	0.0Ω 1/16W J
R0063	NRSA63J-0R0X	MG R	0.0Ω 1/16W J
R0064	NRSA63J-0R0X	MG R	0.0Ω 1/16W J
R0065	NRSA63J-0R0X	MG R	0.0Ω 1/16W J
R0066	NRSA63J-0R0X	MG R	0.0Ω 1/16W J
R0067	NRSA63J-0R0X	MG R	0.0Ω 1/16W J
R0068	NRSA63J-0R0X	MG R	0.0Ω 1/16W J
R0069	NRSA63J-0R0X	MG R	0.0Ω 1/16W J
R0070	NRSA63J-0R0X	MG R	0.0Ω 1/16W J
R0071	NRSA63J-0R0X	MG R	0.0Ω 1/16W J
R0072	NRSA63J-0R0X	MG R	0.0Ω 1/16W J
R0073	NRSA63J-0R0X	MG R	0.0Ω 1/16W J
R0074	NRSA63J-0R0X	MG R	0.0Ω 1/16W J
R0075	NRSA63J-0R0X	MG R	0.0Ω 1/16W J
R0076	NRSA63J-0R0X	MG R	0.0Ω 1/16W J
R0077	NRSA63J-0R0X	MG R	0.0Ω 1/16W J
R0081	NCF31CZ-104X	C CAP.	0.1μF 16V Z
R0087	NRSA63J-221X	MG R	220Ω 1/16W J
R0089	NRSA63J-221X	MG R	220Ω 1/16W J
R0090	NRSA63J-221X	MG R	220Ω 1/16W J
R0091	NRSA63J-221X	MG R	220Ω 1/16W J
R0092	NRSA63J-472X	MG R	4.7kΩ 1/16W J
R0093	NRSA63J-221X	MG R	220Ω 1/16W J
R0094	NRSA63J-472X	MG R	4.7kΩ 1/16W J
R0095	NRSA63J-473X	MG R	47kΩ 1/16W J
R0096	NRSA63J-221X	MG R	220Ω 1/16W J
R0097	NRSA63J-102X	MG R	1kΩ 1/16W J
R0098	NRSA63J-0R0X	MG R	0.0Ω 1/16W J
R0107	NRSA63J-102X	MG R	1kΩ 1/16W J
R0108	NRSA63J-0R0X	MG R	0.0Ω 1/16W J
R0109	NRSA63J-0R0X	MG R	0.0Ω 1/16W J
R0110	NRSA63J-102X	MG R	1kΩ 1/16W J
R0111	NRSA63J-103X	MG R	10kΩ 1/16W J
R0112	NRSA63J-102X	MG R	1kΩ 1/16W J
R0113	NRSA63J-103X	MG R	10kΩ 1/16W J
R0114	NRSA63J-103X	MG R	10kΩ 1/16W J

Symbol No.	Part No.	Part Name	Description
------------	----------	-----------	-------------

## RESISTOR

R0119	NRSA63J-563X	MG R	56kΩ 1/16W J
R0120	NRSA63J-332X	MG R	3.3kΩ 1/16W J
R0121	NRSA63J-182X	MG R	1.8kΩ 1/16W J
R0122	NRSA63J-103X	MG R	10kΩ 1/16W J
R0123	NRSA63J-682X	MG R	6.8kΩ 1/16W J
R0124	NRSA63J-101X	MG R	100Ω 1/16W J
R0125	NRSA63J-472X	MG R	4.7kΩ 1/16W J
R0126	NRSA63J-472X	MG R	4.7kΩ 1/16W J
R0127	NRSA63J-472X	MG R	4.7kΩ 1/16W J
R0128	NRSA63J-472X	MG R	4.7kΩ 1/16W J
R0129	NRSA63J-823X	MG R	82kΩ 1/16W J
R0130	NRSA63J-104X	MG R	100kΩ 1/16W J
R0131	NRSA63J-823X	MG R	82kΩ 1/16W J
R0132	NRSA63J-104X	MG R	100kΩ 1/16W J
R0133	NRSA63J-0R0X	MG R	0.0Ω 1/16W J
R0135	NRSA63J-102X	MG R	1kΩ 1/16W J
R0136	NRSA63J-103X	MG R	10kΩ 1/16W J
R0137	NRSA63J-222X	MG R	2.2kΩ 1/16W J
R0138	NRSA63J-222X	MG R	2.2kΩ 1/16W J
R0139	NRSA63J-222X	MG R	2.2kΩ 1/16W J
R0140	NRSA63J-103X	MG R	10kΩ 1/16W J
R0144	NRSA63J-103X	MG R	10kΩ 1/16W J
R0147	NRSA63J-472X	MG R	4.7kΩ 1/16W J
R0148	NRSA63J-472X	MG R	4.7kΩ 1/16W J
R0149	NRSA63J-472X	MG R	4.7kΩ 1/16W J
R0151	NRSA63J-183X	MG R	18kΩ 1/16W J
R0152	NRSA63J-221X	MG R	220Ω 1/16W J
R0153	NRSA63J-221X	MG R	220Ω 1/16W J
R0154	NRSA63J-221X	MG R	220Ω 1/16W J
R0155	NRSA63J-101X	MG R	100Ω 1/16W J
R0156	NRSA63J-101X	MG R	100Ω 1/16W J
R0158	NRSA63J-221X	MG R	220Ω 1/16W J
R0161	NRSA63J-102X	MG R	1kΩ 1/16W J
R0162	NRSA63J-153X	MG R	15kΩ 1/16W J
R0163	NRSA63J-682X	MG R	6.8kΩ 1/16W J
R0165	NRSA63J-103X	MG R	10kΩ 1/16W J
R0166	NRSA63J-223X	MG R	22kΩ 1/16W J
R0167	NRSA63J-103X	MG R	10kΩ 1/16W J
R0168	NRSA63J-471X	MG R	470Ω 1/16W J

## CAPACITOR

C0001	QETNOJM-477Z	E CAP.	470μF 6.3V M
C0002	NCF31CZ-104X	C CAP.	0.1μF 16V Z
C0003	NCB11CK-225X	C CAP.	2.2μF 16V K
C0004	QETNOJM-108Z	E CAP.	1000μF 6.3V M
C0005	NCB11CK-225X	C CAP.	2.2μF 16V K
C0006	NCB11CK-225X	C CAP.	2.2μF 16V K
C0007	NEH71CM-476X	E CAP.	47μF 16V M
C0008	NCB11CK-225X	C CAP.	2.2μF 16V K
C0012	NCF31CZ-104X	C CAP.	0.1μF 16V Z
C0013	NCF31CZ-104X	C CAP.	0.1μF 16V Z
C0014	NDC31HJ-821X	C CAP.	820pF 50V J
C0015	NDC31HJ-821X	C CAP.	820pF 50V J
C0017	NDC31HJ-101X	C CAP.	100pF 50V J
C0018	NDC31HJ-820X	C CAP.	82pF 50V J
C0019	NEH71CM-476X	E CAP.	47μF 16V M
C0020	NCF31CZ-104X	C CAP.	0.1μF 16V Z
C0021	NEH71CM-476X	E CAP.	47μF 16V M
C0023	NCB31EK-333X	C CAP.	0.033μF 25V K
C0024	NCF31CZ-104X	C CAP.	0.1μF 16V Z
C0025	NCB31EK-333X	C CAP.	0.033μF 25V K
C0026	NCF31CZ-104X	C CAP.	0.1μF 16V Z
C0027	NEH71CM-476X	E CAP.	47μF 16V M
C0028	NEH71CM-476X	E CAP.	47μF 16V M
C0029	NDC31HJ-151X	C CAP.	150pF 50V J
C0030	NCF31CZ-104X	C CAP.	0.1μF 16V Z
C0031	NCF31CZ-104X	C CAP.	0.1μF 16V Z
C0032	NCF31CZ-104X	C CAP.	0.1μF 16V Z
C0034	NCF31CZ-104X	C CAP.	0.1μF 16V Z
C0035	NCF31CZ-104X	C CAP.	0.1μF 16V Z
C0036	NCF31CZ-104X	C CAP.	0.1μF 16V Z
C0037	NCF31CZ-104X	C CAP.	0.1μF 16V Z
C0038	NCF31CZ-104X	C CAP.	0.1μF 16V Z
C0039	NCF31CZ-104X	C CAP.	0.1μF 16V Z
C0040	NDC31HJ-330X	C CAP.	33pF 50V J

△ Symbol No.	Part No.	Part Name	Description
<b>CAPACITOR</b>			
C0041	NDC31HJ-270X	C CAP.	27pF 50V J
C0042	NCF31CZ-104X	C CAP.	0.1μF 16V Z
C0043	NCF31CZ-104X	C CAP.	0.1μF 16V Z
C0045	NCF31CZ-104X	C CAP.	0.1μF 16V Z
C0046	NCF31CZ-104X	C CAP.	0.1μF 16V Z
C0047	NCF31CZ-104X	C CAP.	0.1μF 16V Z
C0048	NEH71CM-476X	E CAP.	47μF 16V M
C0049	NCF31CZ-104X	C CAP.	0.1μF 16V Z
C0050	NCF31CZ-104X	C CAP.	0.1μF 16V Z
C0051	NEH71CM-476X	E CAP.	47μF 16V M
C0052	NCF31CZ-104X	C CAP.	0.1μF 16V Z
C0053	NCF31CZ-104X	C CAP.	0.1μF 16V Z
C0054	NCF31CZ-104X	C CAP.	0.1μF 16V Z
C0055	NCF31CZ-104X	C CAP.	0.1μF 16V Z
C0056	NCF31CZ-104X	C CAP.	0.1μF 16V Z
C0057	NCF31CZ-104X	C CAP.	0.1μF 16V Z
C0059	NEH71CM-106X	E CAP.	10μF 16V M
C0060	NEH71CM-106X	E CAP.	10μF 16V M
C0061	NEH71CM-106X	E CAP.	10μF 16V M
C0062	NRS463J-0R0X	MG R	0.0Ω 1/16W J
C0063	NDC31HJ-820X	C CAP.	82pF 50V J
C0064	NDC31HJ-820X	C CAP.	82pF 50V J
C0065	NDC31HJ-820X	C CAP.	82pF 50V J
C0070	NEH71HM-225X	E CAP.	2.2μF 50V M

**COIL**

L0001	NQL092K-4R7X	INDUCTOR	4.7μH
L0003	NQL092K-4R7X	INDUCTOR	4.7μH
L0005	NQL092K-4R7X	INDUCTOR	4.7μH
L0006	NQL092K-4R7X	INDUCTOR	4.7μH
L0007	NQL092K-4R7X	INDUCTOR	4.7μH
L0008	NQL092K-4R7X	INDUCTOR	4.7μH
L0009	NQL034K-4R7X	INDUCTOR	4.7μH
L0010	NQL092K-4R7X	INDUCTOR	4.7μH
L0011	NQL092K-4R7X	INDUCTOR	4.7μH
L0012	NQL092K-4R7X	INDUCTOR	4.7μH
L0013	NQL092K-4R7X	INDUCTOR	4.7μH
L0014	NQL092K-4R7X	INDUCTOR	4.7μH
L0015	NQL034K-4R7X	INDUCTOR	4.7μH
L0016	NQL034K-4R7X	INDUCTOR	4.7μH
L0017	NQL092K-1R5X	INDUCTOR	1.5μH
L0018	NQL092K-1R5X	INDUCTOR	1.5μH
L0019	NQL092K-1R5X	INDUCTOR	1.5μH
L0020	NQL092K-1R5X	INDUCTOR	1.5μH
L0021	NQL092K-1R5X	INDUCTOR	1.5μH
L0022	NQL092K-1R5X	INDUCTOR	1.5μH

**DIODE**

D0001	MA111-X	SI DIODE
D0005	MA3056/M/-X	ZENER DIODE
D0006	MA3056/M/-X	ZENER DIODE
D0007	MA3056/M/-X	ZENER DIODE
D0008	MA3056/M/-X	ZENER DIODE
D0010	MA3068/M/-X	ZENER DIODE

**TRANSISTOR**

Q0001	2SC2712/YG/-X	SI TRANSISTOR
Q0002	2SC2712/YG/-X	SI TRANSISTOR
Q0007	2SA1162/YG/-X	SI TRANSISTOR
Q0021	2SC2712/YG/-X	SI TRANSISTOR
Q0022	2SC2712/YG/-X	SI TRANSISTOR

**IC**

IC0001	SDA6000	IC	(SERVICE)
IC0002	MR27V3202FJMMAX	IC	
IC0003	K45641632F-TCT5	IC (DIGITAL)	
IC0004	AT24WC32-29WZ	IC	
IC0005	S-80828CNCB-W	IC	
IC0901	TA48M025F-X	IC	
IC0902	TA48M033F-X	IC	
IC0903	MM1437AF-X	IC	

△ Symbol No.	Part No.	Part Name	Description
<b>OTHERS</b>			
CN0001	QGB1505K1-50	B TO B CONNE	
K0001	NRS463J-390X	MG R	39Ω 1/16W J
K0002	NQR0389-003X	FERRITE BEADS	
K0003	NRS463J-0R0X	MG R	0.0Ω 1/16W J
K0004	NQR0389-003X	FERRITE BEADS	
X0001	QAX0669-001Z	CRYSTAL	

# ■ AV SW P.W. BOARD ASS'Y (SMF-0S701A)

Symbol No.	Part No.	Part Name	Description
<b>RESISTOR</b>			
R0101	NRSA63J-750X	MG R	75Ω 1/16W J
R0102	NRSA63J-333X	MG R	33kΩ 1/16W J
R0103	NRSA63J-750X	MG R	75Ω 1/16W J
R0104	NRSA63J-750X	MG R	75Ω 1/16W J
R0105	NRSA63J-222X	MG R	2.2kΩ 1/16W J
R0106	NRSA63J-222X	MG R	2.2kΩ 1/16W J
R0107	NRSA63J-101X	MG R	100Ω 1/16W J
R0108	NRSA63J-333X	MG R	33kΩ 1/16W J
R0109	NRSA63J-101X	MG R	100Ω 1/16W J
R0110	NRSA63J-333X	MG R	33kΩ 1/16W J
R0111	NRSA63J-101X	MG R	100Ω 1/16W J
R0112	NRSA63J-101X	MG R	100Ω 1/16W J
R0113	NRSA63J-101X	MG R	100Ω 1/16W J
R0114	NRSA63J-750X	MG R	75Ω 1/16W J
R0115	NRSA63J-223X	MG R	22kΩ 1/16W J
R0116	NRSA63J-750X	MG R	75Ω 1/16W J
R0117	NRSA63J-223X	MG R	22kΩ 1/16W J
R0118	NRSA63J-750X	MG R	75Ω 1/16W J
R0119	NRSA63J-750X	MG R	75Ω 1/16W J
R0120	NRSA63J-823X	MG R	82kΩ 1/16W J
R0121	NRSA63J-823X	MG R	82kΩ 1/16W J
R0122	NRSA63J-471X	MG R	470Ω 1/16W J
R0123	NRSA63J-223X	MG R	22kΩ 1/16W J
R0124	NRSA63J-153X	MG R	15kΩ 1/16W J
R0125	NRSA63J-222X	MG R	2.2kΩ 1/16W J
R0126	NRSA63J-391X	MG R	390Ω 1/16W J
R0127	NRSA63J-391X	MG R	390Ω 1/16W J
R0128	NRSA63J-104X	MG R	100kΩ 1/16W J
R0129	NRSA63J-222X	MG R	2.2kΩ 1/16W J
R0130	NRSA63J-222X	MG R	2.2kΩ 1/16W J
R0131	NRSA63J-333X	MG R	33kΩ 1/16W J
R0132	NRSA63J-223X	MG R	22kΩ 1/16W J
R0133	NRSA63J-153X	MG R	15kΩ 1/16W J
R0134	NRSA63J-222X	MG R	2.2kΩ 1/16W J
R0135	NRSA63J-333X	MG R	33kΩ 1/16W J
R0136	NRSA63J-222X	MG R	2.2kΩ 1/16W J
R0137	NRSA63J-333X	MG R	33kΩ 1/16W J
R0138	NRSA63J-222X	MG R	2.2kΩ 1/16W J
R0139	NRSA63J-333X	MG R	33kΩ 1/16W J
R0140	NRSA63J-562X	MG R	5.6kΩ 1/16W J
R0141	NRSA63J-102X	MG R	1kΩ 1/16W J
R0142	NRSA63J-102X	MG R	1kΩ 1/16W J
R0143	NRSA63J-101X	MG R	100Ω 1/16W J
R0144	NRSA63J-101X	MG R	100Ω 1/16W J
R0145	NRSA63J-101X	MG R	100Ω 1/16W J
R0146	NRSA63J-101X	MG R	100Ω 1/16W J
R0147	NRSA63J-101X	MG R	100Ω 1/16W J
R0148	NRSA63J-101X	MG R	100Ω 1/16W J
R0149	NRSA63J-101X	MG R	100Ω 1/16W J
R0150	NRSA63J-750X	MG R	75Ω 1/16W J
R0151	NRSA63J-222X	MG R	2.2kΩ 1/16W J
R0152	NRSA63J-333X	MG R	33kΩ 1/16W J
R0153	NRSA63J-750X	MG R	75Ω 1/16W J
R0154	NRSA63J-222X	MG R	2.2kΩ 1/16W J
R0155	NRSA63J-333X	MG R	33kΩ 1/16W J
R0156	NRSA63J-750X	MG R	75Ω 1/16W J
R0157	NRSA63J-562X	MG R	5.6kΩ 1/16W J
R0161	NRSA63J-101X	MG R	100Ω 1/16W J
R0162	NRSA63J-101X	MG R	100Ω 1/16W J
R0163	NRSA63J-101X	MG R	100Ω 1/16W J
R0164	NRSA63J-101X	MG R	100Ω 1/16W J
R0165	NRSA63J-101X	MG R	100Ω 1/16W J
R0166	NRSA63J-101X	MG R	100Ω 1/16W J
R0167	NRSA63J-222X	MG R	2.2kΩ 1/16W J
R0168	NRSA63J-101X	MG R	100Ω 1/16W J
R0169	NRSA63J-333X	MG R	33kΩ 1/16W J
R0170	NRSA63J-221X	MG R	220Ω 1/16W J
R0171	NRSA63J-221X	MG R	220Ω 1/16W J
R0172	NRSA63J-750X	MG R	75Ω 1/16W J
R0173	QRK126J-151X	C R	150Ω 1/2W J
R0174	NRSA63J-101X	MG R	100Ω 1/16W J
R0179	NRSA63J-181X	MG R	180Ω 1/16W J
R0181	NRSA63J-182X	MG R	1.8kΩ 1/16W J
R0188	QRE141J-562Y	C R	5.6kΩ 1/4W J

## CAPACITOR

C0101	NCB31HK-152X	C CAP.	1500pF 50V K
C0102	NCB31HK-152X	C CAP.	1500pF 50V K

Symbol No.	Part No.	Part Name	Description
<b>CAPACITOR</b>			
C0103	QETNLHM-106Z	E CAP.	10μF 50V M
C0104	QETNLHM-105Z	E CAP.	1μF 50V M
C0105	QETNLHM-106Z	E CAP.	10μF 50V M
C0106	QETNLHM-105Z	E CAP.	1μF 50V M
C0107	NCB31HK-103X	C CAP.	0.01μF 50V K
C0108	NCB31HK-152X	C CAP.	1500pF 50V K
C0109	NCB31HK-152X	C CAP.	1500pF 50V K
C0110	QETNLHM-106Z	E CAP.	10μF 50V M
C0111	NCB31HK-152X	C CAP.	1500pF 50V K
C0112	NCB31HK-152X	C CAP.	1500pF 50V K
C0113	QETNLHM-108Z	E CAP.	1000μF 10V M
C0114	NCB31HK-472X	C CAP.	4700pF 50V K
C0115	NCB31HK-472X	C CAP.	4700pF 50V K
C0116	QETNLHM-106Z	E CAP.	10μF 50V M
C0117	QETNLHM-106Z	E CAP.	10μF 50V M
C0118	QETNLHM-106Z	E CAP.	10μF 50V M
C0119	QETNLHM-106Z	E CAP.	10μF 50V M
C0120	QETNLHM-106Z	E CAP.	10μF 50V M
C0121	QETNLHM-105Z	E CAP.	1μF 50V M
C0122	QETNLHM-105Z	E CAP.	1μF 50V M
C0123	QENCLEM-106Z	BP E CAP.	10μF 25V M
C0124	QETNLHM-105Z	E CAP.	1μF 50V M
C0125	QETNLHM-105Z	E CAP.	1μF 50V M
C0126	QENCLEM-105Z	E CAP.	1μF 50V M
C0127	QENCLEM-106Z	BP E CAP.	10μF 25V M
C0128	NCB31HK-103X	C CAP.	0.01μF 50V K
C0129	NCB31HK-103X	C CAP.	0.01μF 50V K
C0130	NCB31HK-103X	C CAP.	0.01μF 50V K
C0131	NCB31HK-103X	C CAP.	0.01μF 50V K
C0132	QETNLHM-106Z	E CAP.	10μF 50V M
C0133	QETNLHM-105Z	E CAP.	1μF 50V M
C0134	QETNLHM-106Z	E CAP.	10μF 50V M
C0135	QETNLHM-105Z	E CAP.	1μF 50V M
C0136	NCB31HK-103X	C CAP.	0.01μF 50V K
C0137	QENCLEM-105Z	E CAP.	1μF 50V M
C0141	QETNLHM-477Z	E CAP.	470μF 16V M
C0142	NCB31HK-103X	C CAP.	0.01μF 50V K
C0143	QETNLHM-106Z	E CAP.	10μF 50V M
C0144	QENCLEM-106Z	BP E CAP.	10μF 25V M
C0145	QETNLHM-107Z	E CAP.	100μF 16V M
C0146	NCB31HK-103X	C CAP.	0.01μF 50V K
C0147	NCB31HK-103X	C CAP.	0.01μF 50V K
C0148	NCB31HK-103X	C CAP.	0.01μF 50V K
C0149	NCB31HK-103X	C CAP.	0.01μF 50V K
C0156	QENCLEM-105Z	E CAP.	1μF 50V M
C0157	QETNLHM-106Z	E CAP.	10μF 50V M

## DIODE

D0104	MA3120/M/-X	ZENER DIODE
D0105	MA3120/M/-X	ZENER DIODE
D0106	MA3120/M/-X	ZENER DIODE
D0107	MA3120/M/-X	ZENER DIODE
D0108	MA3120/M/-X	ZENER DIODE
D0109	MA3120/M/-X	ZENER DIODE
D0110	MA3056/M/-X	ZENER DIODE

## TRANSISTOR

Q0101	DTC323TK-X	DIGI TRANSISTOR
Q0102	2SC2412K/QR/-X	SI TRANSISTOR
Q0103	2SC2412K/QR/-X	SI TRANSISTOR
Q0104	2SA1037AK/QR/-X	SI TRANSISTOR
Q0105	DTC323TK-X	DIGI TRANSISTOR
Q0106	2SC2412K/QR/-X	SI TRANSISTOR
Q0107	2SC2412K/QR/-X	SI TRANSISTOR
Q0110	2SC1740S/QR/-T	SI TRANSISTOR
Q0113	2SC2412K/QR/-X	SI TRANSISTOR

## IC

IC0101	CXA2069Q	IC
--------	----------	----

## OTHERS

CN0001	QGB1505K1-50	B TO B CONNE
J0101	QNZ0454-001	AV JACK
J0102	QNN0349-001	PIN JACK
J0103	QNN0349-002	PIN JACK
J0104	QNN0348-001	PIN JACK
J0105	QNN0349-001	PIN JACK
J0106	QNS0001-001	JACK

# 100Hz P.W. BOARD ASS'Y (SMF-0Z701A)

Symbol No.	Part No.	Part Name	Description
<b>RESISTOR</b>			
R0008	NRS463J-0R0X	MG R	0.0Ω 1/16W J
R0009	NRS463J-0R0X	MG R	0.0Ω 1/16W J
R0010	NRS463J-101X	MG R	100Ω 1/16W J
R0011	NRS463J-101X	MG R	100Ω 1/16W J
R0012	NRS463J-101X	MG R	100Ω 1/16W J
R0101	NRS463J-332X	MG R	3.3kΩ 1/16W J
R0102	NRS463J-222X	MG R	2.2kΩ 1/16W J
R0103	NRS463J-222X	MG R	2.2kΩ 1/16W J
R0104	NRS463J-332X	MG R	3.3kΩ 1/16W J
R0105	NRS463J-222X	MG R	2.2kΩ 1/16W J
R0106	NRS463J-222X	MG R	2.2kΩ 1/16W J
R0107	NRS463J-750X	MG R	75Ω 1/16W J
R0111	NRS463J-750X	MG R	75Ω 1/16W J
R0112	NRS463J-750X	MG R	75Ω 1/16W J
R0113	NRS463J-750X	MG R	75Ω 1/16W J
R0117	NRS463J-0R0X	MG R	0.0Ω 1/16W J
R0118	NRS463J-0R0X	MG R	0.0Ω 1/16W J
R0119	NRS463J-0R0X	MG R	0.0Ω 1/16W J
R0122	NRS463J-0R0X	MG R	0.0Ω 1/16W J
R0123	NRS463J-0R0X	MG R	0.0Ω 1/16W J
R0124	NRS463J-101X	MG R	100Ω 1/16W J
R0125	NRS463J-101X	MG R	100Ω 1/16W J
R0132	NRS463J-100X	MG R	10Ω 1/16W J
R0133	NRS463J-100X	MG R	10Ω 1/16W J
R0134	NRS463J-100X	MG R	10Ω 1/16W J
R0135	NRS463J-100X	MG R	10Ω 1/16W J
R0136	NRS463J-100X	MG R	10Ω 1/16W J
R0137	NRS463J-100X	MG R	10Ω 1/16W J
R0138	NRS463J-100X	MG R	10Ω 1/16W J
R0139	NRS463J-100X	MG R	10Ω 1/16W J
R0141	NRS463J-100X	MG R	10Ω 1/16W J
R0201	NRS463J-121X	MG R	120Ω 1/16W J
R0202	NRS463J-101X	MG R	100Ω 1/16W J
R0203	NRS463J-101X	MG R	100Ω 1/16W J
R0204	NRS463J-0R0X	MG R	0.0Ω 1/16W J
R0205	NRS463J-0R0X	MG R	0.0Ω 1/16W J
R0214	NRS463J-0R0X	MG R	0.0Ω 1/16W J
R0217	NRS463J-103X	MG R	10kΩ 1/16W J
R0218	NRS463J-333X	MG R	33kΩ 1/16W J
R0219	NRS463J-103X	MG R	10kΩ 1/16W J
R0220	NRS463J-822X	MG R	8.2kΩ 1/16W J
R0251	NRS463J-222X	MG R	2.2kΩ 1/16W J
R0252	NRS463J-151X	MG R	150Ω 1/16W J
R0254	NRS463J-391X	MG R	390Ω 1/16W J
R0255	NRS463J-221X	MG R	220Ω 1/16W J
R0256	NRS463J-221X	MG R	220Ω 1/16W J
R0257	NRS463J-271X	MG R	270Ω 1/16W J
R0258	NRS463J-222X	MG R	2.2kΩ 1/16W J
R0259	NRS463J-472X	MG R	4.7kΩ 1/16W J
R0261	NRS463J-222X	MG R	2.2kΩ 1/16W J
R0264	NRS463J-391X	MG R	390Ω 1/16W J
R0271	NRS463J-222X	MG R	2.2kΩ 1/16W J
R0274	NRS463J-391X	MG R	390Ω 1/16W J
R0293	NRS463J-102X	MG R	1kΩ 1/16W J
R0301	NRS463J-104X	MG R	100kΩ 1/16W J
R0302	NRS463J-104X	MG R	100kΩ 1/16W J
R0303	NRS463J-104X	MG R	100kΩ 1/16W J
R0304	NRS463J-101X	MG R	100Ω 1/16W J
R0305	NRS463J-101X	MG R	100Ω 1/16W J
R0306	NRS463J-152X	MG R	1.5kΩ 1/16W J
R0307	NRS463J-152X	MG R	1.5kΩ 1/16W J
R0308	NRS463J-152X	MG R	1.5kΩ 1/16W J
R0401	NRS463J-473X	MG R	47kΩ 1/16W J
R0402	NRS463J-472X	MG R	4.7kΩ 1/16W J
R0404	NRS463J-0R0X	MG R	0.0Ω 1/16W J
R0407	NRS463J-0R0X	MG R	0.0Ω 1/16W J
R0409	NRS463J-0R0X	MG R	0.0Ω 1/16W J

## CAPACITOR

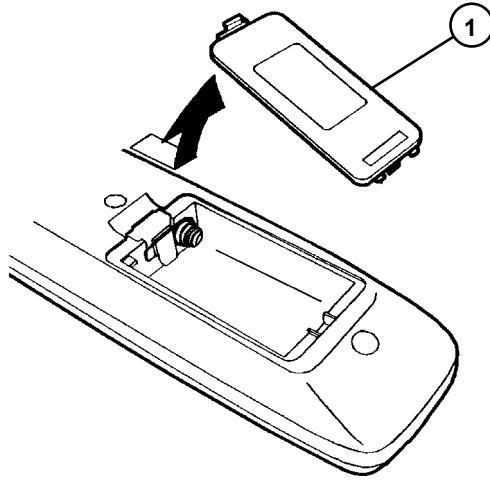
C0001	NCB31CK-104X	C CAP.	0.1μF 16V K
C0002	NEH71CM-476X	E CAP.	47μF 16V M
C0003	NCB31CK-104X	C CAP.	0.1μF 16V K
C0004	NEH71CM-476X	E CAP.	47μF 16V M
C0005	NCB31CK-104X	C CAP.	0.1μF 16V K
C0006	NEH71CM-476X	E CAP.	47μF 16V M
C0007	NDC31HJ-4R0X	C CAP.	4.0pF 50V J

Symbol No.	Part No.	Part Name	Description
<b>CAPACITOR</b>			
C0008	NDC31HJ-4R0X	C CAP.	4.0pF 50V J
C0009	NDC31HJ-4R0X	C CAP.	4.0pF 50V J
C0101	NEH71CM-106X	E CAP.	10μF 16V M
C0102	NCB31EK-473X	C CAP.	0.047μF 25V K
C0103	NEH71CM-476X	E CAP.	47μF 16V M
C0104	NCB31HK-152X	C CAP.	1500pF 50V K
C0105	NDC31HJ-102X	C CAP.	1000pF 50V J
C0106	NCB31CK-104X	C CAP.	0.1μF 16V K
C0107	NCF31CZ-224X	C CAP.	0.22μF 16V Z
C0108	NCB31HK-152X	C CAP.	1500pF 50V K
C0109	NDC31HJ-391X	C CAP.	390pF 50V J
C0110	NEH71CM-106X	E CAP.	10μF 16V M
C0111	NCB31EK-473X	C CAP.	0.047μF 25V K
C0112	NDC31HJ-331X	C CAP.	330pF 50V J
C0116	NCF31CZ-224X	C CAP.	0.22μF 16V Z
C0117	NCF31CZ-224X	C CAP.	0.22μF 16V Z
C0118	NCF31CZ-224X	C CAP.	0.22μF 16V Z
C0122	NDC31HJ-331X	C CAP.	330pF 50V J
C0123	NDC31HJ-331X	C CAP.	330pF 50V J
C0124	NDC31HJ-331X	C CAP.	330pF 50V J
C0125	NDC31HJ-3R0X	C CAP.	3.0pF 50V J
C0126	NDC31HJ-3R0X	C CAP.	3.0pF 50V J
C0128	NCB31CK-104X	C CAP.	0.1μF 16V K
C0129	NCF31CZ-224X	C CAP.	0.22μF 16V Z
C0130	NDC31HJ-391X	C CAP.	390pF 50V J
C0131	NCB31HK-152X	C CAP.	1500pF 50V K
C0132	NCB31EK-473X	C CAP.	0.047μF 25V K
C0133	NCB31HK-152X	C CAP.	1500pF 50V K
C0134	NCB31CK-683X	C CAP.	0.068μF 16V K
C0136	NCB31CK-683X	C CAP.	0.068μF 16V K
C0137	NCB31CK-683X	C CAP.	0.068μF 16V K
C0138	NCB31HK-152X	C CAP.	1500pF 50V K
C0139	NCB31EK-473X	C CAP.	0.047μF 25V K
C0140	NEH71CM-476X	E CAP.	47μF 16V M
C0141	NDC31HJ-100X	C CAP.	10pF 50V J
C0201	NEH71CM-476X	E CAP.	47μF 16V M
C0202	NCB31CK-104X	C CAP.	0.1μF 16V K
C0203	NCB31CK-104X	C CAP.	0.1μF 16V K
C0204	NCB31CK-104X	C CAP.	0.1μF 16V K
C0205	NCB31CK-104X	C CAP.	0.1μF 16V K
C0206	NEH71CM-476X	E CAP.	47μF 16V M
C0207	NCB31CK-104X	C CAP.	0.1μF 16V K
C0208	NCB31CK-104X	C CAP.	0.1μF 16V K
C0209	NCB31CK-104X	C CAP.	0.1μF 16V K
C0210	NCB31CK-104X	C CAP.	0.1μF 16V K
C0211	NCB31CK-104X	C CAP.	0.1μF 16V K
C0212	NDC31HJ-180X	C CAP.	18pF 50V J
C0213	NDC31HJ-180X	C CAP.	18pF 50V J
C0214	NCB31CK-104X	C CAP.	0.1μF 16V K
C0215	NCB31CK-104X	C CAP.	0.1μF 16V K
C0216	NCB31CK-104X	C CAP.	0.1μF 16V K
C0217	NCB31CK-104X	C CAP.	0.1μF 16V K
C0218	NDC31HJ-561X	C CAP.	560pF 50V J
C0219	NEH71CM-476X	E CAP.	47μF 16V M
C0220	NCB31CK-104X	C CAP.	0.1μF 16V K
C0221	NCB31CK-104X	C CAP.	0.1μF 16V K
C0222	NCB31CK-104X	C CAP.	0.1μF 16V K
C0223	NCB31CK-104X	C CAP.	0.1μF 16V K
C0224	NCB31CK-104X	C CAP.	0.1μF 16V K
C0225	NCB31CK-104X	C CAP.	0.1μF 16V K
C0226	NCB31CK-104X	C CAP.	0.1μF 16V K
C0227	NCB31CK-104X	C CAP.	0.1μF 16V K
C0228	NCB31CK-104X	C CAP.	0.1μF 16V K
C0229	NCB31CK-104X	C CAP.	0.1μF 16V K
C0231	NCB31CK-104X	C CAP.	0.1μF 16V K
C0237	NEH71CM-106X	E CAP.	10μF 16V M
C0238	NEH71CM-106X	E CAP.	10μF 16V M
C0251	NDC31HJ-4R0X	C CAP.	4.0pF 50V J
C0252	NCB31CK-104X	C CAP.	0.1μF 16V K
C0253	NCB31CK-104X	C CAP.	0.1μF 16V K
C0254	NDC31HJ-120X	C CAP.	12pF 50V J
C0255	NDC31HJ-270X	C CAP.	27pF 50V J
C0256	NEH71CM-106X	E CAP.	10μF 16V M
C0261	NDC31HJ-4R0X	C CAP.	4.0pF 50V J
C0262	NCB31CK-104X	C CAP.	0.1μF 16V K
C0263	NCB31CK-104X	C CAP.	0.1μF 16V K
C0264	NDC31HJ-120X	C CAP.	12pF 50V J
C0265	NDC31HJ-270X	C CAP.	27pF 50V J
C0271	NDC31HJ-4R0X	C CAP.	4.0pF 50V J
C0272	NCB31CK-104X	C CAP.	0.1μF 16V K

Symbol No.	Part No.	Part Name	Description
<b>CAPACITOR</b>			
C0273	NCB31CK-104X	C CAP.	0.1 $\mu$ F 16V K
C0274	NDC31HJ-120X	C CAP.	12pF 50V J
C0275	NDC31HJ-270X	C CAP.	27pF 50V J
C0281	NCF31AZ-105X	C CAP.	1 $\mu$ F 10V Z
C0282	NEH71CM-476X	E CAP.	47 $\mu$ F 16V M
C0283	NCB31CK-104X	C CAP.	0.1 $\mu$ F 16V K
C0284	NCB31CK-104X	C CAP.	0.1 $\mu$ F 16V K
C0285	NCB31CK-104X	C CAP.	0.1 $\mu$ F 16V K
C0286	NEH71CM-106X	E CAP.	10 $\mu$ F 16V M
C0301	NEH71CM-476X	E CAP.	47 $\mu$ F 16V M
C0302	NCB31CK-104X	C CAP.	0.1 $\mu$ F 16V K
C0303	NCB31CK-104X	C CAP.	0.1 $\mu$ F 16V K
C0402	NCB31CK-104X	C CAP.	0.1 $\mu$ F 16V K
C0403	NCB31CK-104X	C CAP.	0.1 $\mu$ F 16V K
C0404	NDC31HJ-330X	C CAP.	33pF 50V J
<b>COIL</b>			
L0001	NQL092K-1R5X	INDUCTOR	1.5 $\mu$ H
L0002	NQL092K-1R5X	INDUCTOR	1.5 $\mu$ H
L0003	NQL092K-1R5X	INDUCTOR	1.5 $\mu$ H
L0101	NQL034K-150X	INDUCTOR	15 $\mu$ H
L0102	NQL092K-3R3X	INDUCTOR	3.3 $\mu$ H
L0106	NQL092K-3R3X	INDUCTOR	3.3 $\mu$ H
L0107	NQL092K-3R3X	INDUCTOR	3.3 $\mu$ H
L0108	NQL092K-3R3X	INDUCTOR	3.3 $\mu$ H
L0109	NQL034K-6R8X	INDUCTOR	6.8 $\mu$ H
L0201	NQL034K-100X	INDUCTOR	10 $\mu$ H
L0202	NQL034K-100X	INDUCTOR	10 $\mu$ H
L0203	NQL034K-100X	INDUCTOR	10 $\mu$ H
L0204	NQL034K-100X	INDUCTOR	10 $\mu$ H
L0205	NQL034K-100X	INDUCTOR	10 $\mu$ H
L0209	NQL092K-1R5X	INDUCTOR	1.5 $\mu$ H
L0210	NQL092K-1R5X	INDUCTOR	1.5 $\mu$ H
L0211	NQR0413-003X	BEADS CORE	
L0251	NQL092K-5R6X	INDUCTOR	5.6 $\mu$ H
L0261	NQL092K-5R6X	INDUCTOR	5.6 $\mu$ H
L0271	NQL092K-5R6X	INDUCTOR	5.6 $\mu$ H

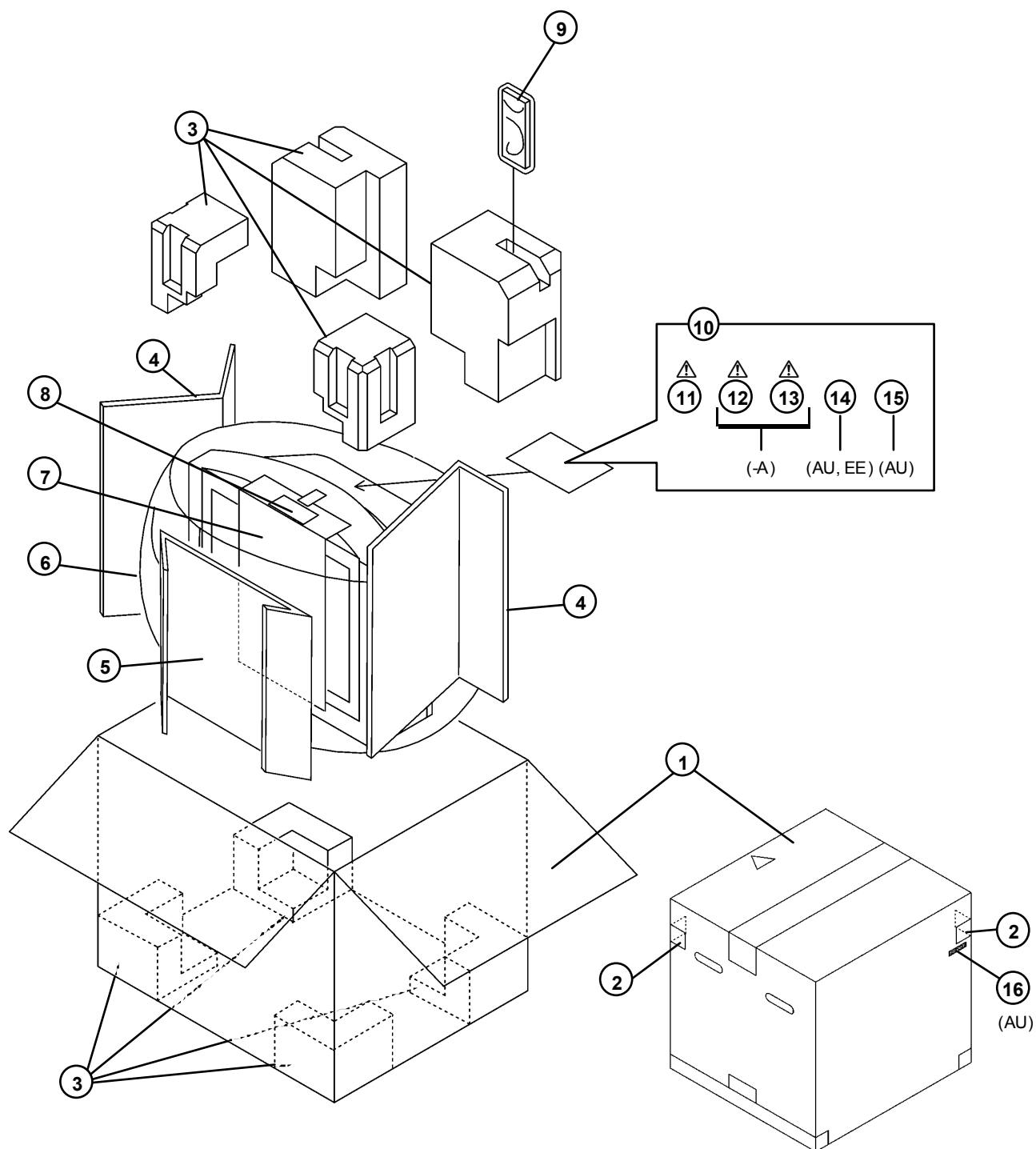
Symbol No.	Part No.	Part Name	Description
<b>DIODE</b>			
D0401	MA111-X	SI DIODE	
<b>TRANSISTOR</b>			
Q0101	2SA1037AK/QR/-X	SI TRANSISTOR	
Q0102	2SA1037AK/QR/-X	SI TRANSISTOR	
Q0201	2SA1037AK/QR/-X	SI TRANSISTOR	
Q0251	2SA1037AK/QR/-X	SI TRANSISTOR	
Q0252	2SA1037AK/QR/-X	SI TRANSISTOR	
Q0253	2SC2412K/QR/-X	SI TRANSISTOR	
Q0261	2SA1037AK/QR/-X	SI TRANSISTOR	
Q0271	2SA1037AK/QR/-X	SI TRANSISTOR	
Q0301	2SC2412K/QR/-X	SI TRANSISTOR	
Q0302	2SC2412K/QR/-X	SI TRANSISTOR	
Q0303	2SC2412K/QR/-X	SI TRANSISTOR	
<b>IC</b>			
IC0101	VPC3230D-QA-B3	IC	
IC0201	SAA4979H/V105	IC	
IC0202	SAA4994H/V1	IC	
IC0203	SAA4955HL/V1	IC	
IC0212	R1170H251B-X	IC	
IC0213	TC7WH32FK-X	IC	
IC0301	TD9178T/N1-X	IC	
IC0401	S-80828CNRB-W	IC	
IC0402	TC7WH34FU-X	IC	
<b>OTHERS</b>			
CN0003	QGB1505K1-50	B TO B CONNE	
LC0010	NQR0313-009X	EMI FILTER	
LC0011	NQR0313-009X	EMI FILTER	
LC0012	NQR0313-009X	EMI FILTER	
LC0014	NQR0313-007X	EMI FILTER	
LC0015	NQR0313-007X	EMI FILTER	
X0101	QAX0655-001Z	CRYSTAL	
X0201	QAX0273-001Z	CRYSTAL	

## REMOTE CONTROL UNIT PARTS LIST



△ Ref.No.	Part No.	Part Name.	Description
1	25-1168F	BATTERY COVER	(RM-C1030-1H/RM-C1031-2H)

## PACKING





## PACKING PARTS LIST

△ Ref.No.	Part No.	Part Name	Description
<b>HV-29WZ</b>			
1	GG10044-044A-H	PACKING CASE	
2	GG20025-001A-H	CORNER LABEL	(×2)
3	GG10193-001B-H	CUSHION ASSY	8pcs in 1set
4	GG20011-009A-H	SUPPORT PAD	(×2)
5	GG20011-008A-H	SUPPORT PAD	
6	CP30967-004-H	POLY BAG	
7	LC30946-001A-H	CRT PROTECTOR	
8	LC30947-002A-H	CAUTION SHEET	
9	RM-C1030-1H	REMOCON UNIT	
△ 10	CP30966-001-H	POLY BAG	
△ 11	LCT1200-001A-H	INST BOOK	

### HV-29WZ/HK

1	GG10044-044A-H	PACKING CASE	
2	GG20025-001A-H	CORNER LABEL	(×2)
3	GG10193-001B-H	CUSHION ASSY	8pcs in 1set
4	GG20011-009A-H	SUPPORT PAD	(×2)
5	GG20011-008A-H	SUPPORT PAD	
6	CP30967-004-H	POLY BAG	
7	LC30946-001A-H	CRT PROTECTOR	
8	LC30947-002A-H	CAUTION SHEET	
9	RM-C1031-2H	REMOCON UNIT	
△ 10	CP30966-001-H	POLY BAG	
△ 11	LCT1201-001A-H	INST BOOK	

### HV-29WZ/-A

1	GG10044-044A-H	PACKING CASE	
2	GG20025-001A-H	CORNER LABEL	(×2)
3	GG10193-001B-H	CUSHION ASSY	8pcs in 1set
4	GG20011-009A-H	SUPPORT PAD	(×2)
5	GG20011-008A-H	SUPPORT PAD	
6	CP30967-004-H	POLY BAG	
7	LC30946-001A-H	CRT PROTECTOR	
8	LC30947-002A-H	CAUTION SHEET	
9	RM-C1030-1H	REMOCON UNIT	
△ 10	CP30966-001-H	POLY BAG	
△ 11	LCT1200-001A-H	INST BOOK	
△ 12	LCT1203-001A-H	DIGEST MANUAL	
△ 13	QAM0055-001	CONVERSION PLUG	

### HV-29WZ/AU

1	GG10044-044A-H	PACKING CASE	
2	GG20025-001A-H	CORNER LABEL	(×2)
3	GG10193-001B-H	CUSHION ASSY	8pcs in 1set
4	GG20011-009A-H	SUPPORT PAD	(×2)
5	GG20011-008A-H	SUPPORT PAD	
6	CP30967-004-H	POLY BAG	
7	LC30946-001A-H	CRT PROTECTOR	
8	LC30947-002A-H	CAUTION SHEET	
9	RM-C1030-1H	REMOCON UNIT	
△ 10	CP30966-001-H	POLY BAG	
△ 11	LCT1200-001A-H	INST BOOK	
14	BT-56001-2	WARRANTY CARD	
15	BT-56002-2	S CENTER LIST	
16	GG40016-002A-H	STICKER	

### HV-29WZ/EE

1	GG10044-044A-H	PACKING CASE	
2	GG20025-001A-H	CORNER LABEL	(×2)
3	GG10193-001B-H	CUSHION ASSY	8pcs in 1set
4	GG20011-009A-H	SUPPORT PAD	(×2)
5	GG20011-008A-H	SUPPORT PAD	
6	CP30967-004-H	POLY BAG	
7	LC30946-001A-H	CRT PROTECTOR	
8	LC30947-002A-H	CAUTION SHEET	
9	RM-C1030-1H	REMOCON UNIT	
△ 10	CP30966-001-H	POLY BAG	
△ 11	LCT1202-001A-H	INST BOOK	
14	BT-54012-2	WARRANTY CARD	

---

---

**Memo**

---

---

=====

**Memo**

=====



**JVC**

**VICTOR COMPANY OF JAPAN, LIMITED**

HOME AV NETWORK BUSINESS UNIT 12, 3-chome, Moriya-cho, Kanagawa-ku, Yokohama, Kanagawa-prefecture, 221-8528, Japan



Printed in Japan  
0209 WPC  
DP6058